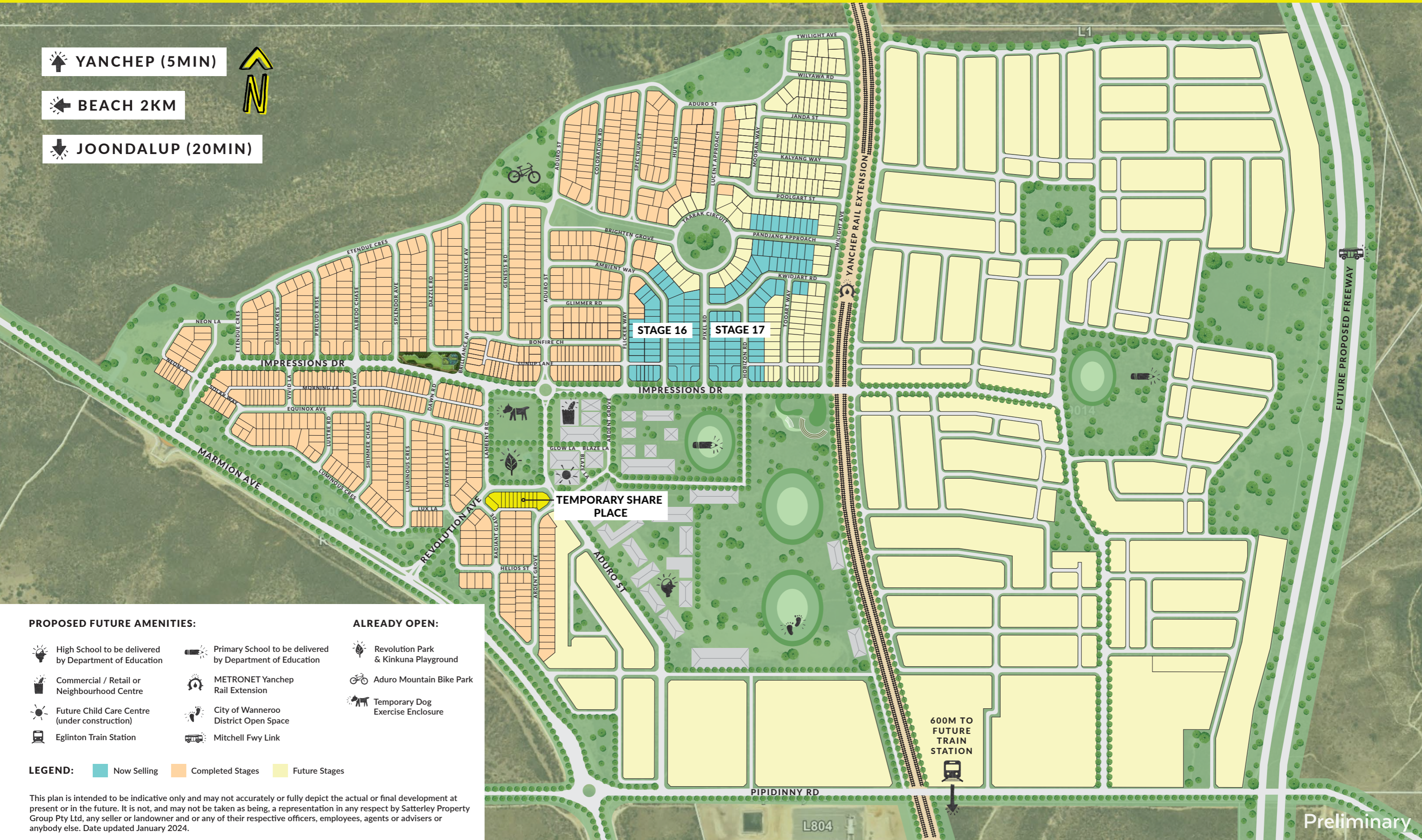


↑ **YANCHEP (5MIN)**

← **BEACH 2KM**

↓ **JOONDALUP (20MIN)**



PROPOSED FUTURE AMENITIES:

- High School to be delivered by Department of Education
- Commercial / Retail or Neighbourhood Centre
- Future Child Care Centre (under construction)
- Eglinton Train Station

- Primary School to be delivered by Department of Education
- METRONET Yanchep Rail Extension
- City of Wanneroo District Open Space
- Mitchell Fwy Link

ALREADY OPEN:

- Revolution Park & Kinkuna Playground
- Aduro Mountain Bike Park
- Temporary Dog Exercise Enclosure

LEGEND: ■ Now Selling ■ Completed Stages ■ Future Stages

This plan is intended to be indicative only and may not accurately or fully depict the actual or final development at present or in the future. It is not, and may not be taken as being, a representation in any respect by Satterley Property Group Pty Ltd, any seller or landowner and or any of their respective officers, employees, agents or advisers or anybody else. Date updated January 2024.

Preliminary