

Bondi

22.6-23.5 Squares Under Roofline including Alfresco & Double Garage



Starting from **\$169,500**

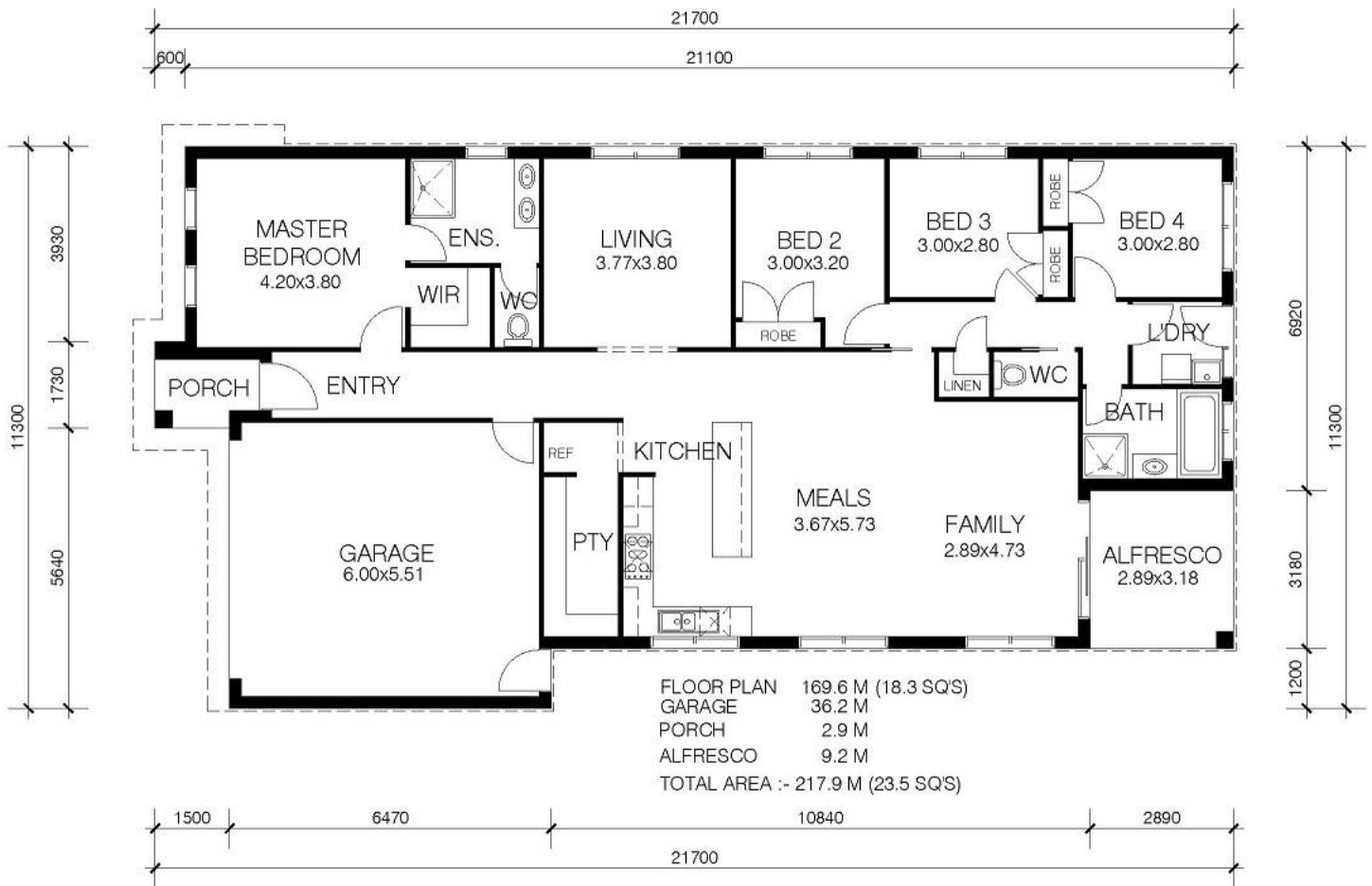
For 22.6 Squares

- Modern Facade
- Theatre Room
- Walk in Pantry
- Stainless Steel Appliances
- Alfresco Area



Bondi

22.6-23.5 Squares Under Roofline including Alfresco & Double Garage



\$179,500

Display Home Floor Plan

23.5 Squares

4 Bedrooms
Theatre Room
Alfresco Area
Walk in Pantry



Bondi

22.6-23.5 Squares Under Roofline including Alfresco & Double Garage

INCLUSIONS:

- Stainless Steel 900mm Gas Hotplates
- Stainless Steel 900mm Under-bench Oven
- 900mm Curved Glass Canopy Rangehood
- Ducted Heating to 7 Points
- One Panel Solar Hot-Water Unit OR 170L stored Hot-Water Unit where Grey-Water connection is required
- Dishwasher space
- 20mm Stone Benchtops
- Laminated Kitchen and Vanities Sheen
- 1 x Set of Pot Draws to Kitchen
- Timber Shelving to Walk in Pantry
- Modern Flick-mixer taps throughout
- 1200 x 900 Shower to ensuite
- 900 x 900 shower to bathroom
- White bathroom and ensuite products
- Modern square vanity basins
- Mirrors in ensuite and bathroom
- Clear and Pivot shower screens
- Exhaust fans to bathroom and ensuite
- Built in Robes to bedrooms 2, 3 and 4
- Spacious Linen cupboard
- Feature Front Door PMAD 4G Clear Glass
- Flush Internal doors
- Painted Skirts and Architrave
- Tiled Skirts to Wet Areas
- Chrome Door Furniture
- Alfresco area with plain concrete flooring
- Bayonet socket fittings to each room (globes not supplied)
- Floor Tiles to Entry, Kitchen, Family, Meals & Wet Areas
- Carpet from Builders range
- Washable Wall Paints
- Locking aluminum windows throughout
- Tiled Roof
- Colorbond Fascia and Gutters
- Render to Portico
- All Plans and Specifications
- Soil Report
- Engineer Class M Slab, engineered edge beams at 200mm
- Gas & Electrical underground works only
- Sewer up to 45 meters
- Storm water up to 60 meters
- Fall Allowance 300mm
- Concrete pump and temporary fencing as required
- Circuit Breaker and Smoke Detector
- Garden Taps Front and Rear
- Termite Protection
- Solid Pine Frame
- Insulation as required as per 6 star energy rating report
- Now includes bushfire rating of 12.5 if required
- Three Month Defect Period
- Ten Year Structural Guarantee
- Double garage with automated front Panel lift Door with Brickwork above

HOME MAKER PACK INCLUDED
KNOCKOUT PACK INCLUDED
PINK PACK INCLUDE

Not Included

Display Home Lighting,
Downlights, White Painted
Woodwork, Landscaping,
Alarm, Cooling, Security Doors,
Furniture and Office Fittings

