



# MELROSE 262

Facade: Bliss

Transform your family life with convenient and compelling Melrose. The sun-filled kitchen makes meal preparation a time to enjoy, while the pantry and additional storage throughout, help keep areas clean and tidy. To assure peaceful retreat and privacy, the master bedroom is at the front of the home, featuring an ensuite and walk-in robe. With four bedrooms and multiple living areas, Melrose 262 is designed with the whole family in mind.

## FEATURES

- Walk-in pantry
- Linen closets
- Master bed at front
- Alfresco
- Truecore® steel frame
- Colorbond® steel roof

**BLOCK WIDTH 14.00m**



4



2



2



2

**Display location:**

**Botanical Estate**

12-14 Poppy Street

Mickleham Victoria 3064

For opening hours visit [jgking.com.au](http://jgking.com.au)

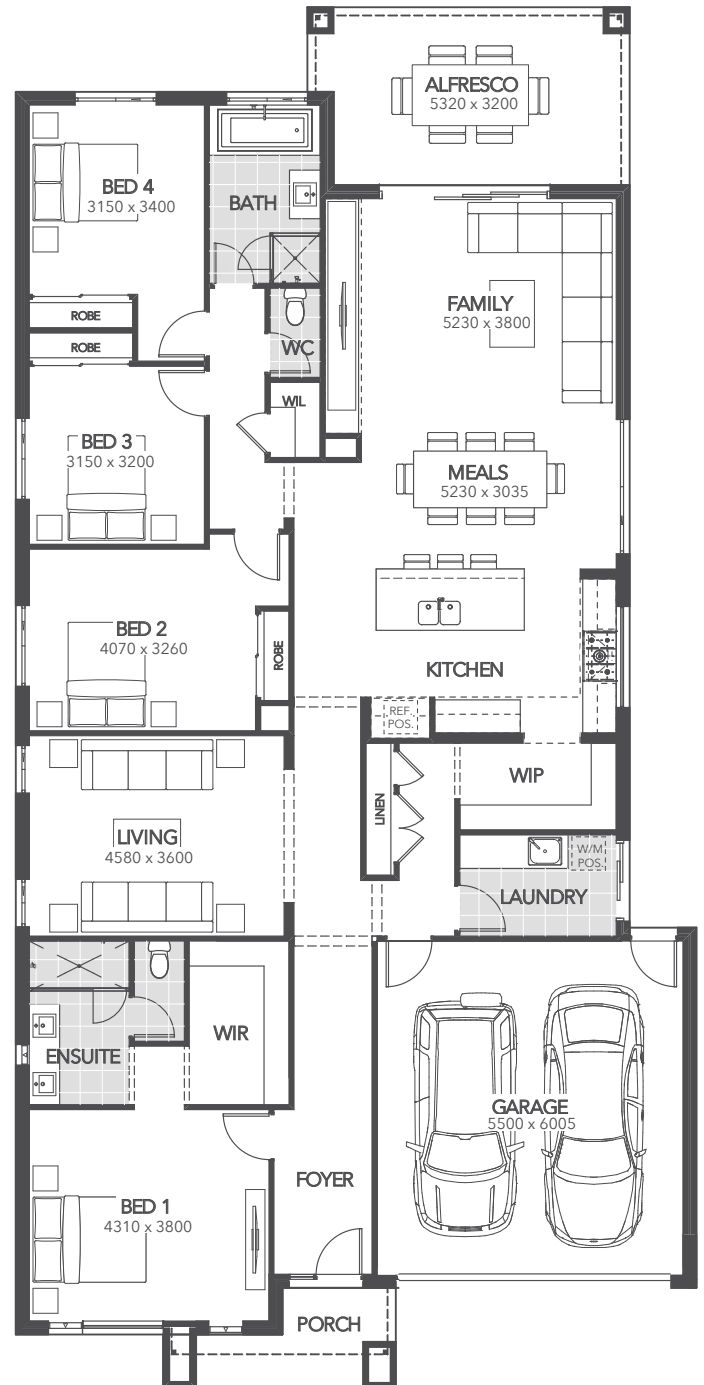
## MELROSE 262

HOUSE	203.82m <sup>2</sup>
GARAGE	36.06m <sup>2</sup>
PORCH	5.73m <sup>2</sup>
ALFRESCO	17.74m <sup>2</sup>
EXTERIOR LENGTH	24.81m
EXTERIOR WIDTH	12.23m
TOTAL HOUSE AREA	263.35m <sup>2</sup>
SQUARES	28.35sq

### Victoria's largest builder of steel frame homes.

Superior to timber for its termite and fire resistance, steel frame technology is quickly becoming the number one choice for home builders in Australia. At JG King, we have a proven track record in building steel frame homes since 1985.

- TERMITE RESISTANT
- BUSHFIRE PROTECTION
- 50 YEAR STRUCTURAL WARRANTY
- MULTI AWARD WINNING BUILDER
- OVER 20,000 HOMES BUILT
- MELBOURNE & REGIONAL VICTORIA



Whilst every endeavour has been made to ensure the accuracy of the information provided, all images are for illustration purposes only and may depict fixtures, finishes and features either not supplied or are upgrade options by JG King Homes. These items include decorative light fittings, wall finishes, furniture, window furnishings, fireplace, cladding, in built joinery and landscaping, such as planter boxes, retaining walls, water features, fencing and barbeques. For detailed home pricing and standard inclusions regarding home designs and your build location, please talk to a sales consultant. Facade and floorplan images shown are artist impressions and are indicative only. Please refer to working drawings for specific details. Speak to a JG King Homes sales consultant for more information. Copyright © 2019 Reproduction in any form either in whole or part is forbidden. JG King Pty Ltd (T/A JG King Homes) ABN 21 006 627 210 Registered Building Practitioner Licence CDB-U 49366. V1 03.12.2019