



THE VISTA



LIVE YOUR  
BEST LIFE

*Vision*  
SERIES

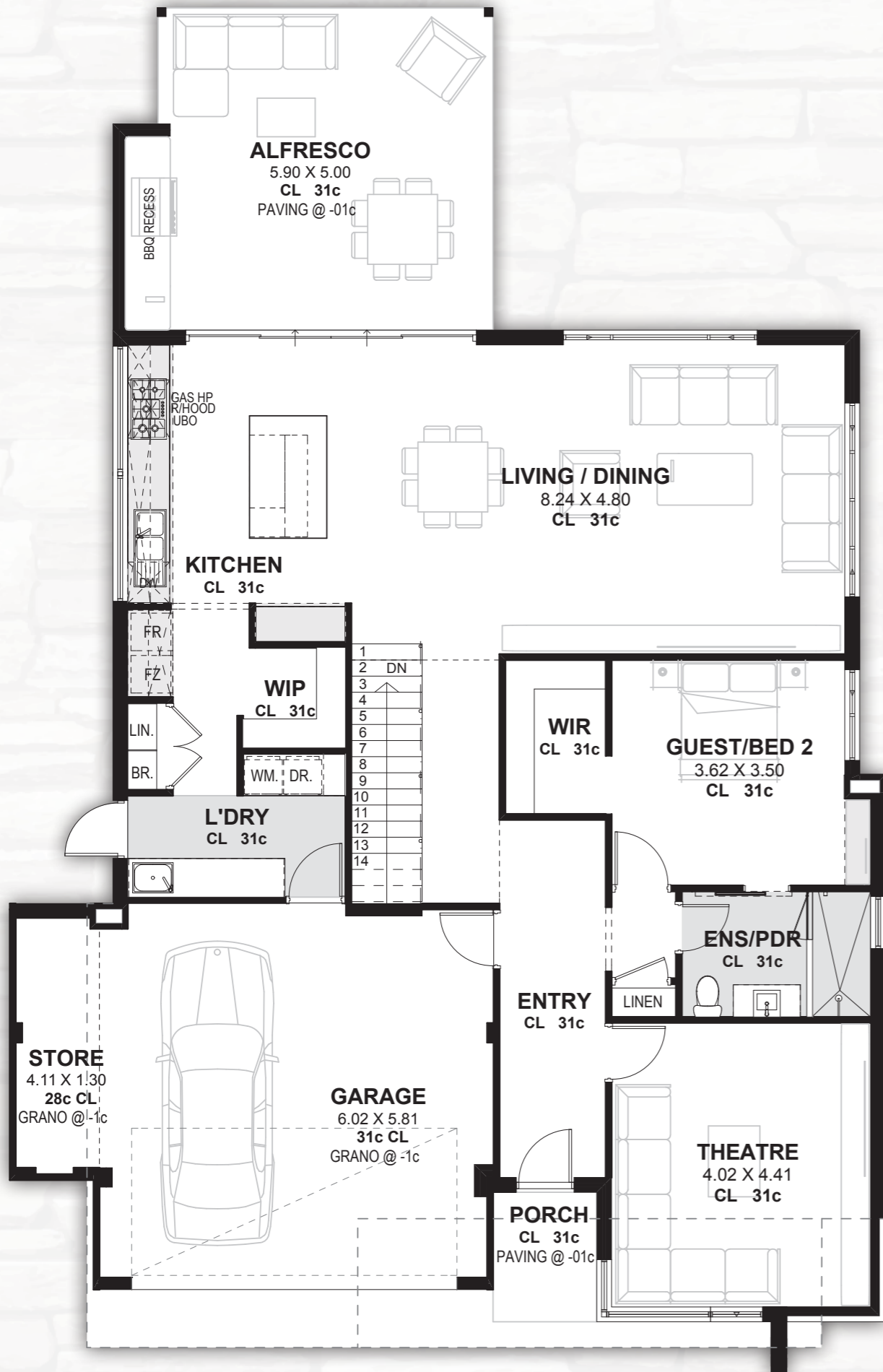


## SIMPLY *creative*

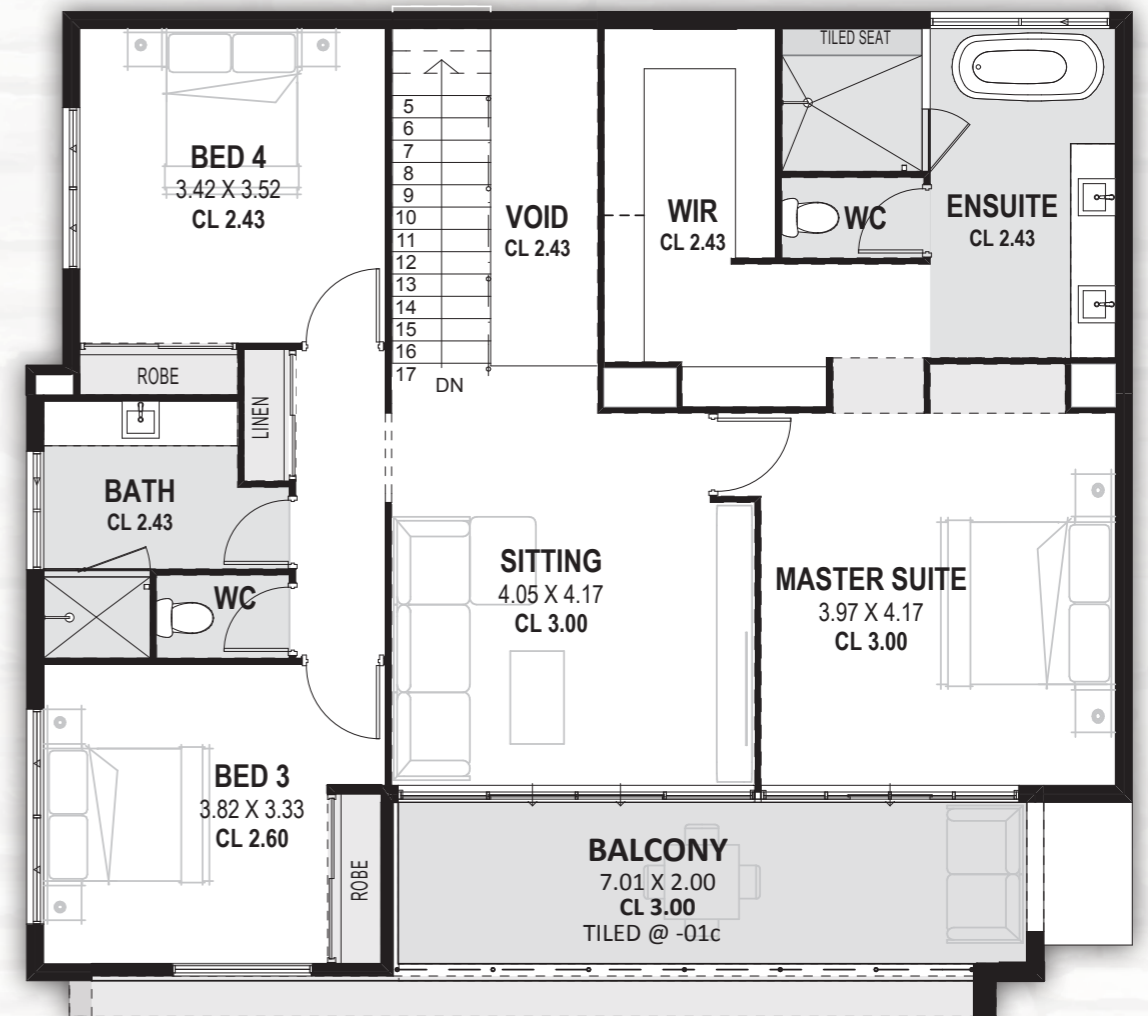
The Vista is part of our Vision Series of homes, where innovative construction techniques combine with an emphasis on cutting edge design, delivering you affordable luxury.

The contemporary elevation with clean, simple lines and feature timber look panelling has an architectural edge that offers plenty of street appeal and is sure to stand apart in your new neighbourhood.

Designed for lots from 15 metres wide, this 4 bedroom, 3 bathroom home is perfect for families of all shapes and sizes.



GROUND FLOOR



UPPER FLOOR

## THE VISTA

SUITABLE FOR FRONTAGES FROM 15 METRES

### HOW IT MEASURES UP

Frontage	13.59m
Depth	21.19m
Area – Ground Floor	
Living	140.57m <sup>2</sup>
Garage	36.67m <sup>2</sup>
Alfresco	28.24m <sup>2</sup>
Store	5.96m <sup>2</sup>
Porch	2.39m <sup>2</sup>
<b>Total – Ground Floor</b>	<b>213.83m<sup>2</sup></b>



Area – Upper Floor	
Living	116.52m <sup>2</sup>
Balcony	14.57m <sup>2</sup>
<b>Total – Upper Floor</b>	<b>131.09m<sup>2</sup></b>
<b>GRAND TOTAL</b>	<b>344.92m<sup>2</sup></b>

READY TO GET  
*creative?*

At Novus we're committed to building a home that epitomises the very best that life has to offer.

A home that will not only suit your lifestyle, but your budget too.

Our team of building consultants and dedicated in-house designers can work with you to create a home that will help you live your best life.





[www.novushomes.com.au](http://www.novushomes.com.au)



JOINT MBA AND HIA WINNER

32 Mumford Place Balcatta WA 6021 | Telephone: 08 9240 8001 | BC8967

© Novus Homes | All plans and information in this brochure copyright protected by Novus Homes. Antonelli Investments ACN 059 245 617.