



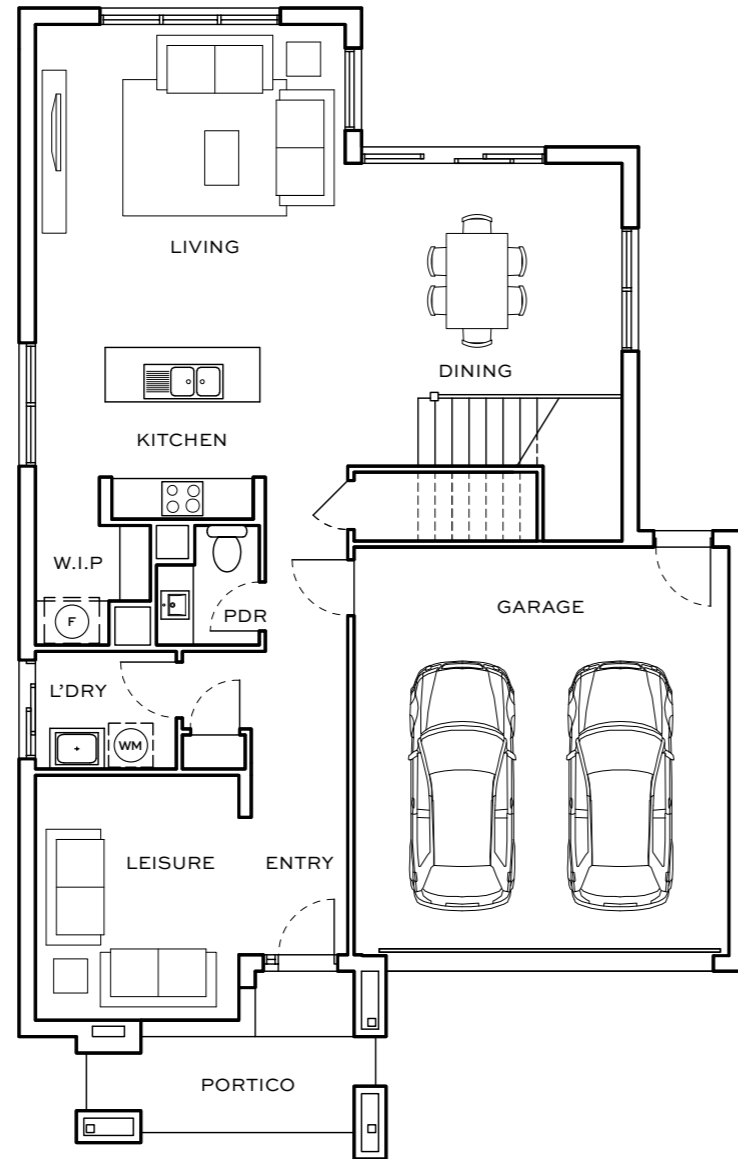
ST HELENA
PLACE

BURSARIA | FACADE I

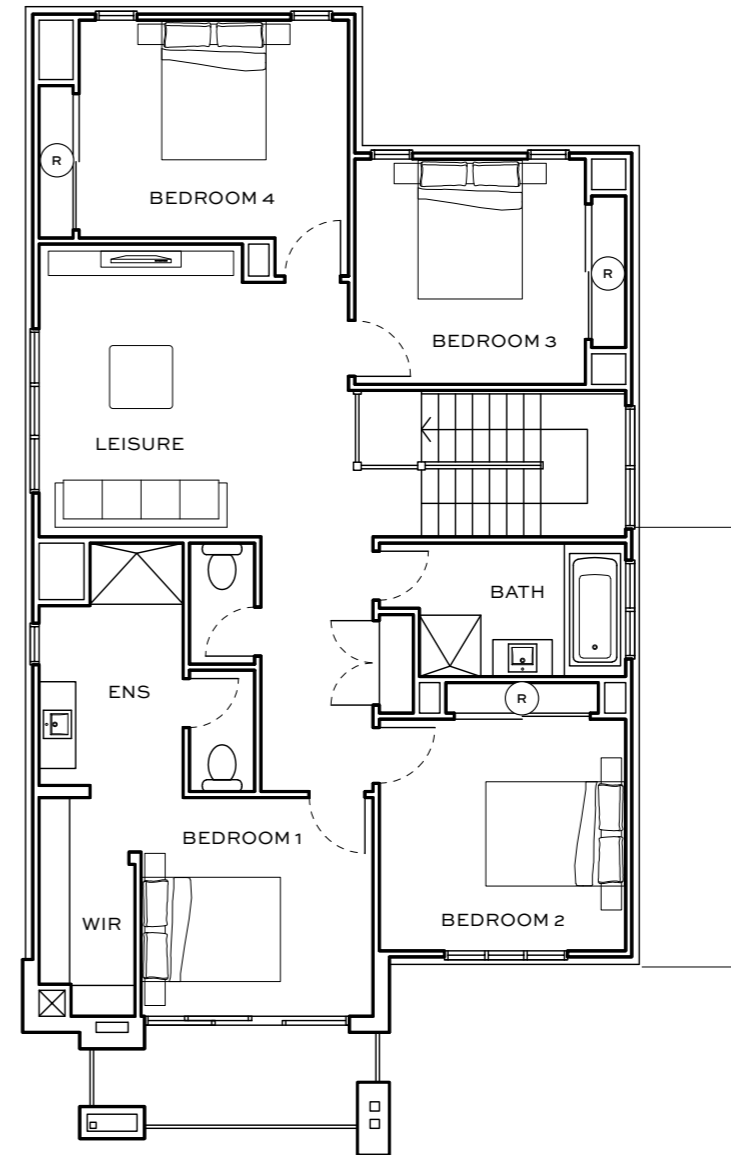
Bursaria Facade I

-  4 BEDROOMS
-  2.5 BATHROOMS
-  2 CARPARKS

AREA SCHEDULE	M ²
GROUND FLOOR AREA	98.55
FIRST FLOOR AREA	119.45
TOTAL INTERNAL AREA	218.00
GARAGE AREA	36.09
PORTICO AREA	7.66
TOTAL GROSS AREA	268.34



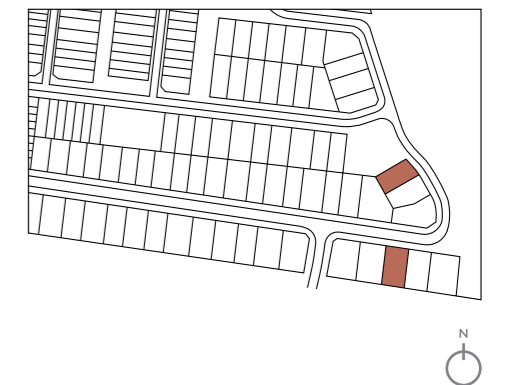
GROUND FLOOR



FIRST FLOOR

KEY

FRIDGE / FREEZER	F
PANTRY	P
ROBE	R
WASHING MACHINE SPACE	WM



This floorplan is subject to change, please refer to the Sales Consultant for actual floorplan and inclusions.

STHELENAPLACE.COM.AU
1800 900 300

132 Diamond Creek Rd, St Helena VIC 3088

MANAGED AND MARKETED BY



DEVELOPED BY



The information contained in this promotional material is for illustration purposes only, is subject to change, and cannot form part of an offer or contract. Statements, figures, calculations, plans, still images, moving images and representations are indicative only. The images (including landscapes) are artists impressions and are indicative only (including with respect to colours). Plans are not drawn to scale. The appearance and dimensions of the property, and the inclusion, appearance, dimensions and placement of the fittings in the property, may change during development. Prospective purchasers must rely on their own enquiries and documents included in the contract of sale. St Helena Place is developed by Far East Land and Housing Development Pte Ltd ABN 97 161 287 142, managed and marketed by Satterley Property Group Pty Ltd ACN 009 054 979. Printed August 2022.