

MUELLE



*A neighbourhood
reimagined.*

— MARCH 2020

Your home for life.



This is Myella.

Nestled amongst trees along the serene waters of Lake Joondalup, 10 minutes to the beach and 5 minutes from Joondalup city centre, and surrounded by amenities for a picture-perfect lifestyle of convenience.

Legend.

SHOPPING

- 1 Lakeside Shopping Centre
- 2 Drovers Shopping Precinct

AMENITIES

- 3 Botanic Golf & Leapfrog Café
- 4 Joondalup Health Campus
- 5 HBF Arena

TRANSPORT

- 6 Joondalup Train Station

EDUCATION

- 7 North Metropolitan TAFE
- 8 ECU Joondalup
- 9 Lake Joondalup Baptist College

LGAS & GOVERNMENT DEPARTMENTS

- 10 Joondalup Regional Centre



My community.

Myella is a neighbourhood reimagined – an idyllic balance of natural beauty and a close-knit community feel. A neighbourhood designed for neighbours – a place to truly call home.



— RECIPE OF THE MONTH

Food to share with family and friends.

WHITE CHOCOLATE CHIP AND RASPBERRY COOKIES

Ingredients:

125g butter	1 ¾ cups self-raising flour, sifted
½ cup caster sugar	1 cup large white chocolate chips
½ cup lightly packaged brown sugar, sifted	½ cup frozen raspberries
1 egg	½ tsp vanilla extract

Instructions:

1. Preheat oven to 180°C.
2. Roughly chop the white chocolate chips and set aside.
3. Chop up the butter and place it into a medium sized mixing bowl, add sugars and vanilla extract.
4. Cream with an electric beater until light and fluffy.
5. Lightly beat the egg in a separate bowl and add it to the mixture.
6. Add sifted flour, mixing until well combined.
7. Then add white chocolate chips, roughly chop the frozen raspberries and add to mixture.
8. Gently mix with a spoon.
9. Shape tablespoons of mixture into balls and place on a tray, leaving room for your cookies to spread out.
10. Bake for approx. 10 minutes or until they start to turn golden.
11. Allow to cool and then move to a wire rack.

MUM'S HONEYCOMB

Ingredients:

200g caster sugar	2 tsp bicarbonate soda
5 tbsp golden syrup	

Instructions:

1. Line a baking tray, allowing the sides to overhang.
2. Mix caster sugar and golden syrup in a deep saucepan and stir over a gentle heat until the sugar has melted.
3. Once completely melted, turn up the heat a little and simmer until you have an amber coloured caramel (this won't take long).
4. Then turn off the heat, add bicarbonate soda and stir in with a wooden spoon until it has all disappeared and the mixture is foaming.
5. Pour onto baking tray and allow to set for 1 – 1 ½ hours until the honeycomb is hard and ready to crumble or snap into chunks.

Serve with love x



My environment.

Contemporary, landscaped roads and pathways meander between trees and reserved bushland, filled with birds and wildlife.

Every morning is a delight waking up to natural beauty and the cheerful sounds of our native neighbours flying about in this warm, serene environment.



Native neighbours.

RED WATTLEBIRD

Named for the reddish wattle on the side of its neck, this passerine bird (with perfect legs for perching) is native to the area and is the second-largest species of Australian honeyeater.

AUSTRALIAN RINGNECK

You might know this bird better by its other name – a “28”! The parrots are named for their triple-noted call, which sounds like they’re saying “28” as they fly by.

LITTLE CORELLA

This white cocky does something uncommon in the bird world — play! They’ve been seen sliding down steep rooves and then flying back to slide down again, and hanging upside down just for fun.

WHITE IBIS

This native wading bird is closely related to the African Ibis, sacred in the religion of Ancient Egyptians, where it was linked to the god Thoth.

AUSTRALIAN MAGPIE

Described as one of Australia’s most accomplished songbirds, the familiar black and white bird has an array of complex calls to listen out for on your morning walk.

SPLENDID FAIRY-WREN

This bird’s trademark velvety blue-and-black plumage is actually only seen in male wrens, with brown female counterparts named “Jenny wrens”.



My home.

Leafy streets are lined by an eclectic collection of homes in every size for every kind of person. Houses cosy enough for a cuppa alone, but with plenty of space to play. And in Myella, we always make time to play.

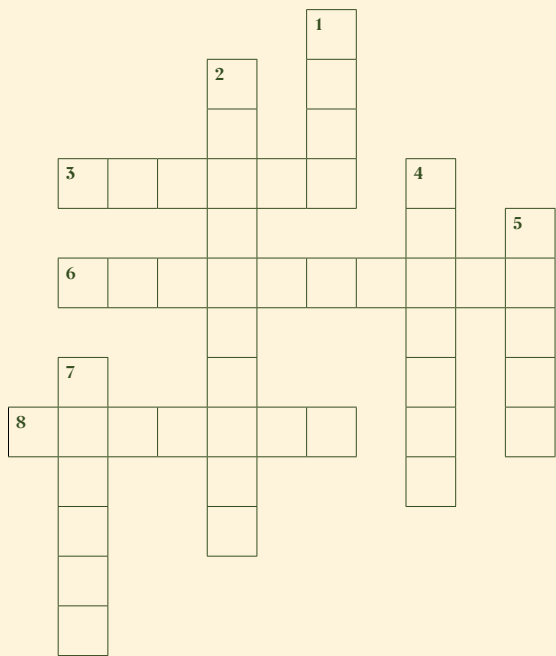


Starting a new garden.

1. Consider your options. Do you want a garden of plants and flowers, or fruits and veggies?
2. Find the perfect place to start. Do your plants need more sunshine or shade?
3. Work the soil. This step is essential for a nutritious, green garden.
4. Water and tend to your garden with love. For best results, always water early in the morning.
5. You're on your way to a growing garden! Keep up the good work to help it reach its full potential.

My playground.

From moments of quiet contemplation with the ones you love by the lake, or getting active along gorgeous cycle paths through nearby bushland, or even learn how to fly a kite again – this is truly the lifestyle you’ve been waiting for.



Crossword.

Unwind and let your mind discover some of these local landmarks and natural wonders.

DOWN

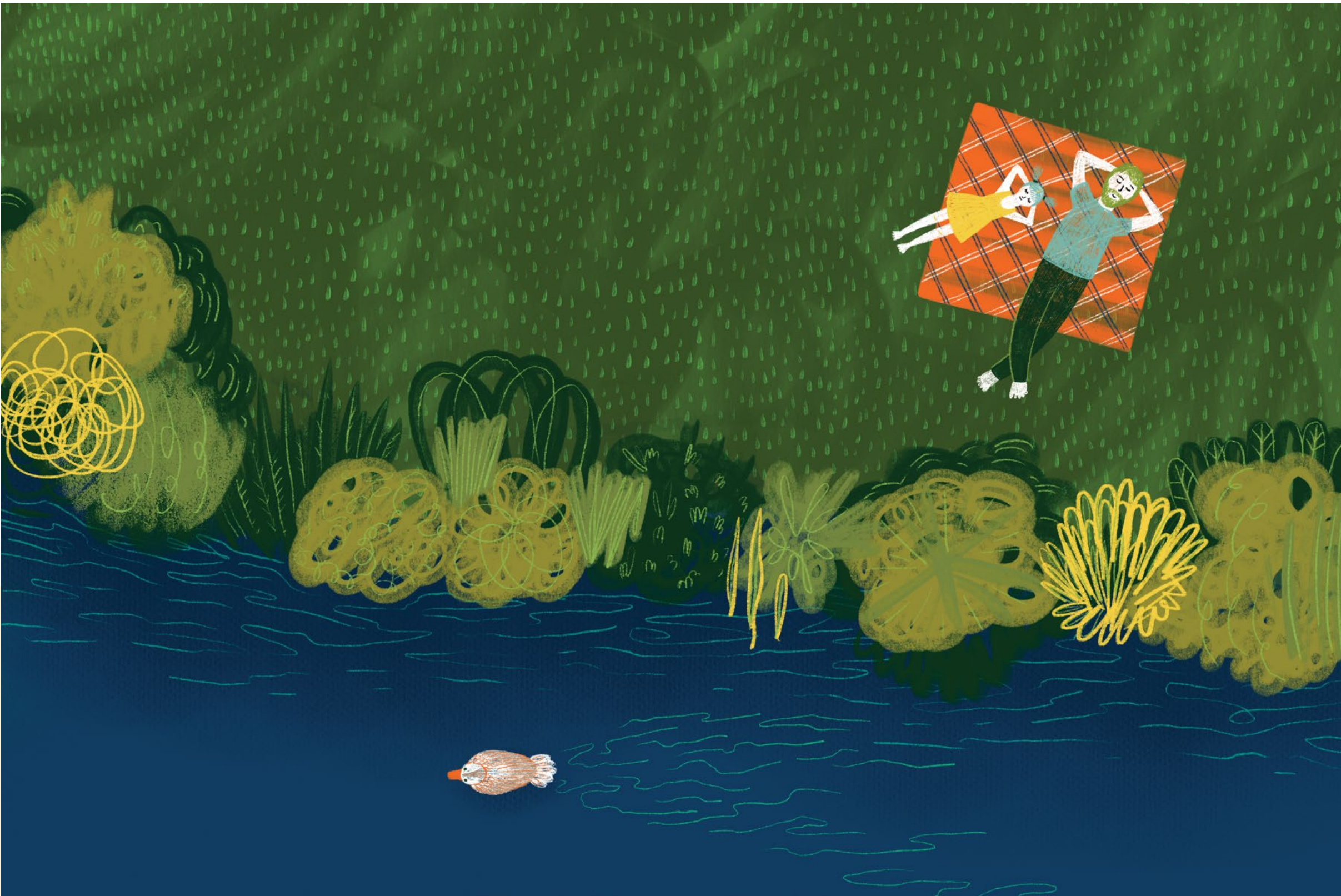
- 1. Local natural landmark; Pinar's _____ (4)
- 2. Part of the Honeyeater species of birds; A red _____ (10)
- 4. Native plant with reddish, orange cone shape flowers (7)
- 5. One of Lake Joondalup's many islands (5)
- 7. Popular black and white Australian bird (6)

CLUES:
1. I'm tall, slim and have lots of arms.
2. One of your native neighbours!
3. I am very slow and love to swim.
4. 7 letters. 3 syllables. First letter is B.
5. M__U__P.

ACROSS

- 3. Native fauna; The Southwestern Long-necked _____ (6)
- 6. Lake Joondalup forms part of the _____ Regional Park (10)
- 8. Western shores of Lake Joondalup; Neil _____ Park (7)

6. YELLA_____
7. I'm known for swooping!
8. H_W_I_N_S.



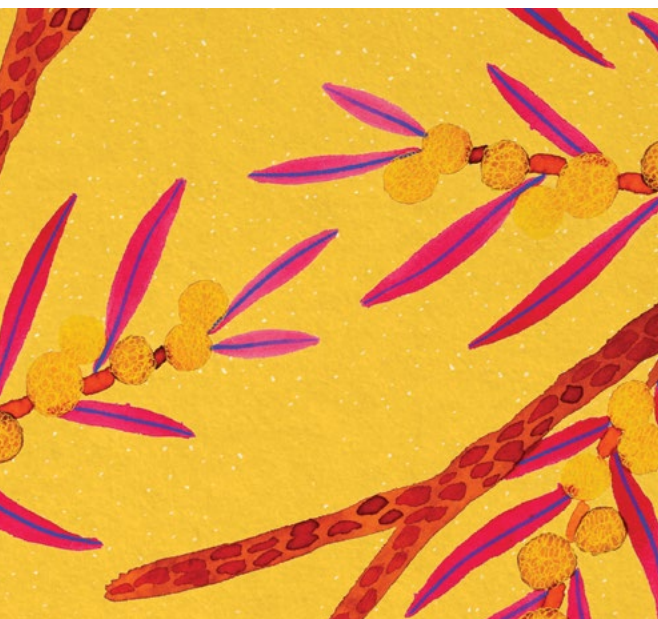
R	K	S	L	F	D	C	O	R	E	L	L	A	B	K	C	H
G	O	R	F	N	D	J	I	Z	B	U	S	H	L	A	N	D
E	J	O	O	N	D	A	L	U	P	S	N	G	N	N	K	P
E	N	X	R	C	A	N	E	O	V	Q	R	G	F	E	J	P
I	I	V	J	Z	E	A	S	D	R	I	B	N	E	D	D	H
P	V	D	R	H	I	I	Z	T	A	K	Y	V	V	R	N	X
G	O	I	M	S	P	V	U	E	M	Y	E	L	L	A	U	R
A	C	L	K	Q	T	R	L	S	A	C	T	G	M	G	O	U
M	T	N	P	M	T	P	S	U	T	D	P	U	L	S	R	O
O	A	T	E	L	F	Z	W	T	K	D	J	M	B	R	G	B
B	V	O	E	M	S	F	S	P	B	H	A	W	N	E	Y	H
K	W	H	F	L	O	E	K	Y	F	A	O	L	A	V	A	G
Y	K	E	I	W	K	H	E	L	T	T	A	W	T	O	L	I
U	C	F	C	A	C	V	S	A	H	N	N	Y	U	R	P	E
G	E	W	L	X	J	A	R	C	H	E	Z	P	R	D	O	N
I	X	F	T	N	Q	T	W	U	H	M	S	K	E	Y	O	R
U	Z	D	J	V	A	A	I	E	M	D	A	L	R	Z	E	N

Wordsearch.

Take a moment, get lost in this search and enjoy.

Myella	Playground
Magpie	Corella
Turtle	Drovers
Neighbour	Life
Birds	Eucalyptus
Joondalup	Nature
Garden	Home
Banksia	Wattle
Bushland	Lake

Head to the Myella website to uncover all answers.
MyellaEstate.com.au



*My Community.
My Environment.
My Home.
My Playground.*

MYELLA

Discover the joy of everything this community
has to offer. Register your interest now.

MYELLA ESTATE MANAGER
Alan Abel
Mobile 0418 890 095
Email myella.sales@satterley.com.au
MyellaEstate.com.au

