

Re-placed at all new and original corners, unless otherwise stated.

Original information compiled from SP-339104 in the Department of Resources.

See Sheet 2 for Reinstatement Report.

See Sheet 8 for Reference Marks & MGA Coordinates Tables.

For Lots 1301-1307 & 1343-1350 See Sheet 5.

For Lots 1323-1337 See Sheet 6.

For Lots 1308-1314 & 1338-1342 See Sheet 7.

JFP Urban Consultants Pty. Ltd. (ACN 050 414 045) hereby certify that the land comprised in this plan was surveyed by the corporation, by Paul Anthony HOLDEN, Surveying Associate, for whose work the corporation accepts responsibility, under the supervision of Christopher John McCORRINDALE, Cadastral Surveyor, and that the plan is accurate, that the said survey was performed in accordance with the Survey and Mapping Infrastructure Act 2003 and Surveyors Act 2003 and associated Regulations and Standards and that the said survey was completed on 10/10/2023.

[Signature]
Authorised Signatory

Date: 27/10/2023

722902377

EL 400 \$5,843.59
24/11/2023 09:26:58

(Dealing No.)

**WARNING : Folded or Mutilated Plans will not be accepted.
Plans may be rolled.
Information may not be placed in the outer margins.**

Sheet **2** of **8**

4. Lodged by

(Include address, phone number, reference, and Lodger Code)

Existing		Created		
Title Reference	Description	New Lots	Road	Secondary Interests
51326409	Lot 91 on SP339104	1301-1314, 1323-1350, 9001, 9002 & 131	New Rd	I & J

MORTGAGE ALLOCATIONS

Mortgage	Lots Fully Encumbered	Lots Partially Encumbered
718883273	1301-1314, 1323-1350, 9001, 9002 & 131	_____

ENCUMBRANCE EASEMENT ALLOCATIONS

Easement	Lots to be Encumbered
Emt A on SP317384 (721204696)	131
Emt B on SP263374 (715860943)	9001
Emt C on SP263374 (715860944)	9001
Emt D on SP317384 (721204696)	131
Emt E on SP317404 (722461353)	131
Emt H on SP319186 (722518189)	131

Emts F & G on SP319186 (722518188) to be surrendered prior to the registration of this plan.

REINSTATEMENT REPORT

Plans searched - SP339104 (subject Plan), IS308595, IS319268, SP327109, SP319186, SP317404, SP317403, SP317384, IS261138, SP263374, RP892012, IS206021, RP848627 and RC815440.

Original corners fixed by corner marks, reference marks and/or dimensions from recent surveys.

All bearings & distances match recent surveys within Cadastral Survey Tolerances.

1329, 1347, 9001 & 131	POR 352 & 354
1301-1314, 1323-1328, 1330-1346 1348-1350 & 9002	POR 354
Lots	Orig

2. Orig Grant Allocation :

3. References :

Dept File :
Local Govt :
Surveyor : B3742-Stg I3

5. Passed & Endorsed :

By: JFP Urban Consultants Pty Ltd
A.C.N. 050 414 045
Date : 27/10/2023
Signed: *[Signature]*
Designation : Cadastral Surveyor

6. Building Format Plans only.

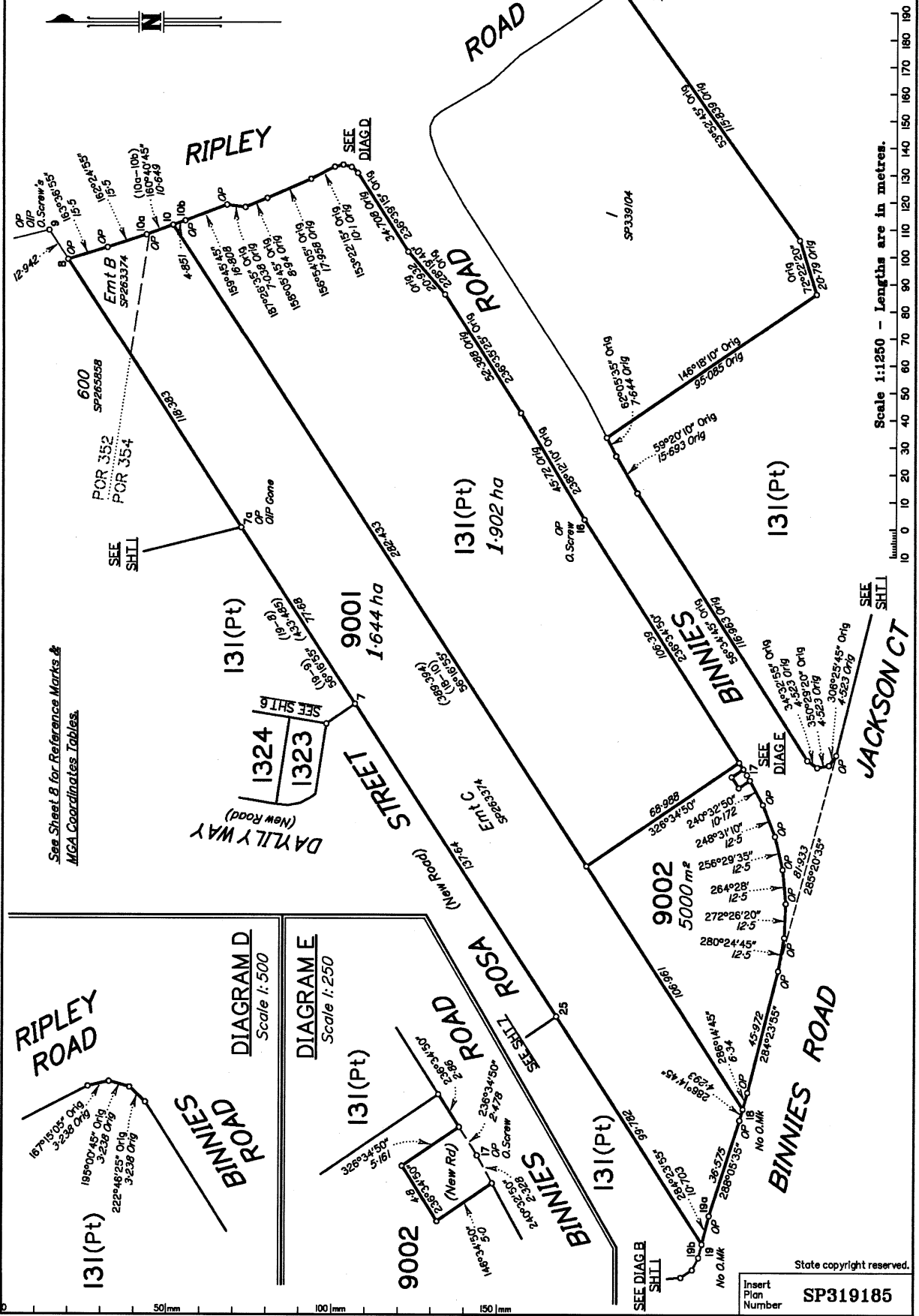
I certify that :
* As far as it is practical to determine, no part of the building shown on this plan encroaches onto adjoining lots or road.
* Part of the building shown on this plan encroaches onto adjoining * lots and road

Cadastral Surveyor/Director * Date
*delete words not required

7. Lodgement Fees :

Survey Deposit \$
Lodgement \$
..... New Titles \$
Photocopy \$
Postage \$
TOTAL \$

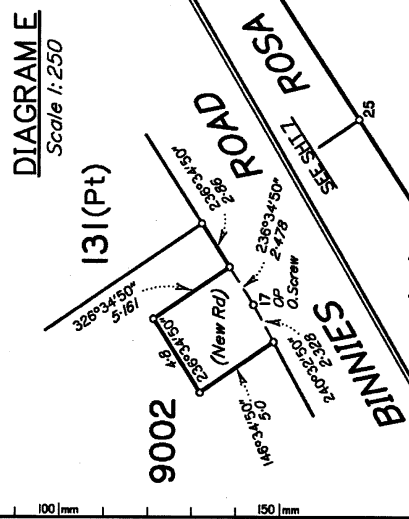
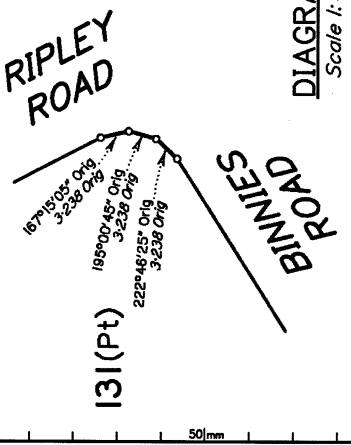
B. Insert Plan Number **SP319185**



Scale 1:1250 - Lengths are in metres.

0 10 20 30 40 50 60 70 80 90 100 110 120 130 140 150 160 170 180 190

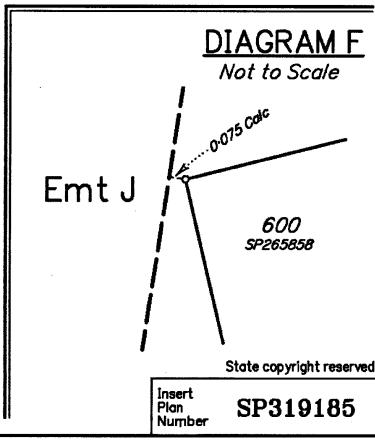
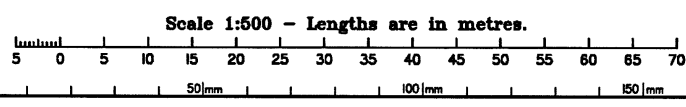
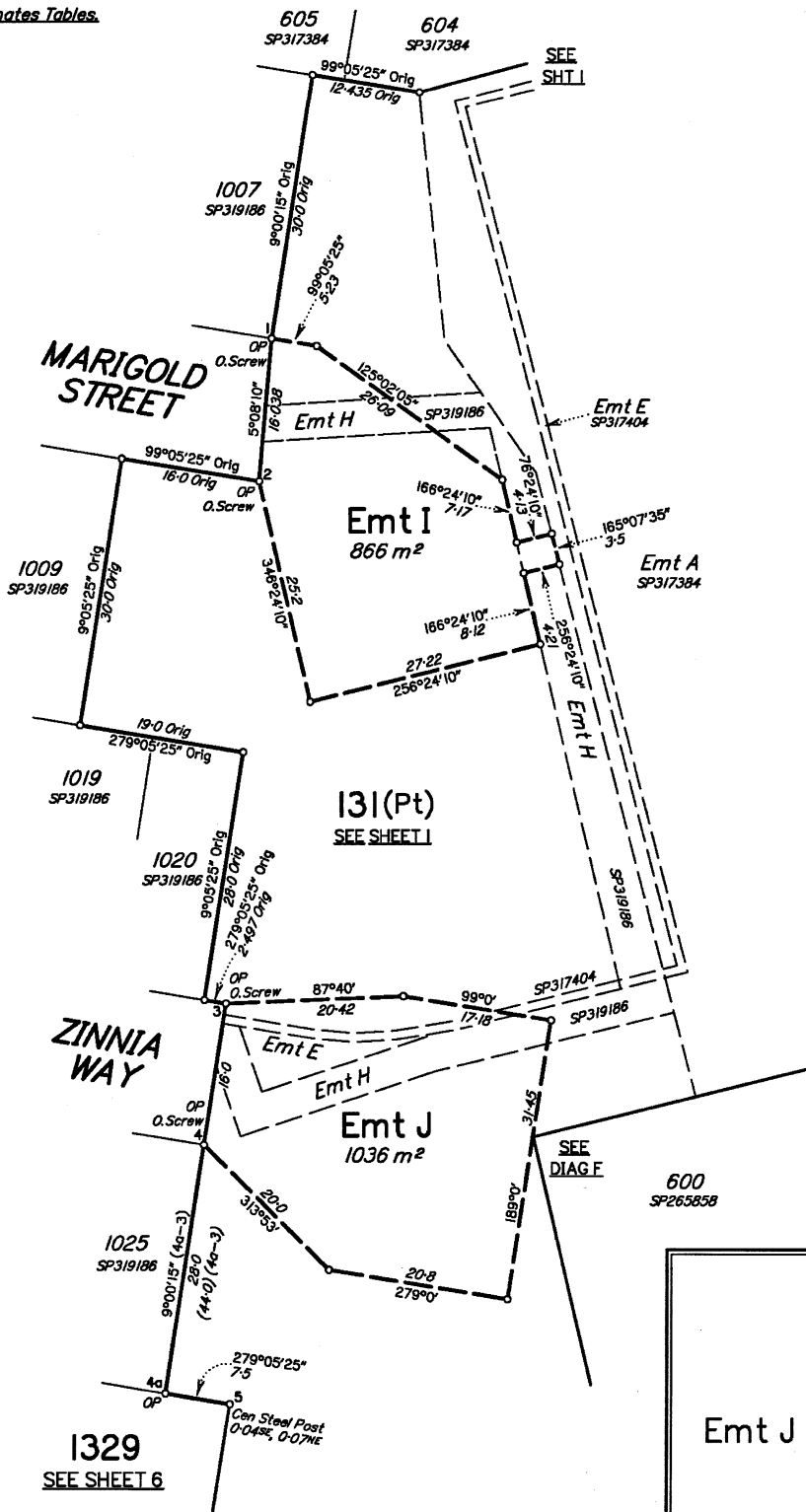
See Sheet 8 for Reference Marks &
MGA Coordinates Tables.



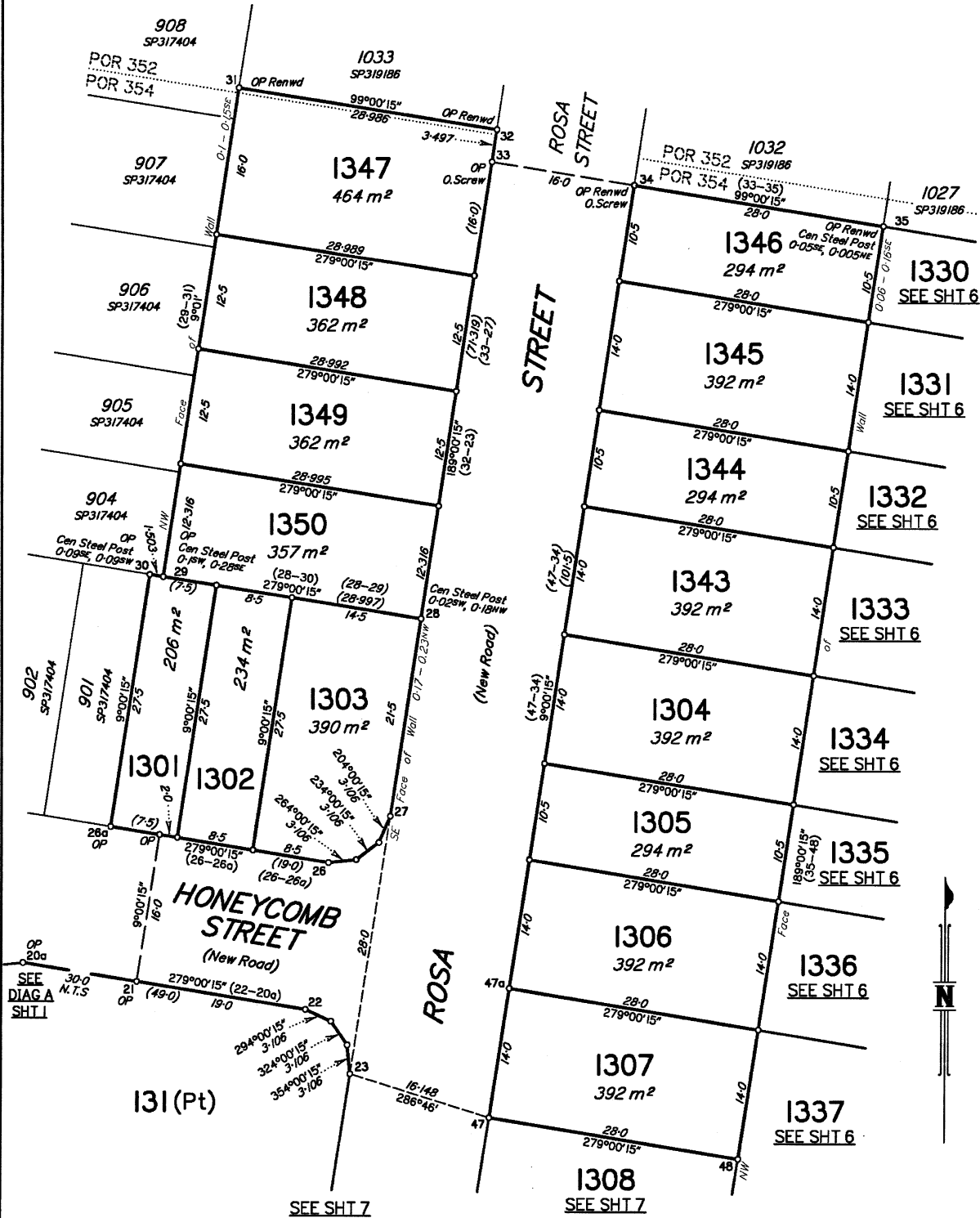
State copyright reserved.

Insert Plan Number **SP319185**

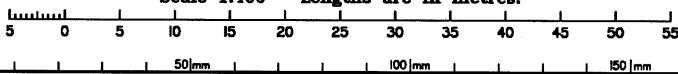
See Sheet 8 for Reference Marks &
MGA Coordinates Tables.



See Sheet 8 for Reference Marks &
MGA Coordinates Tables.

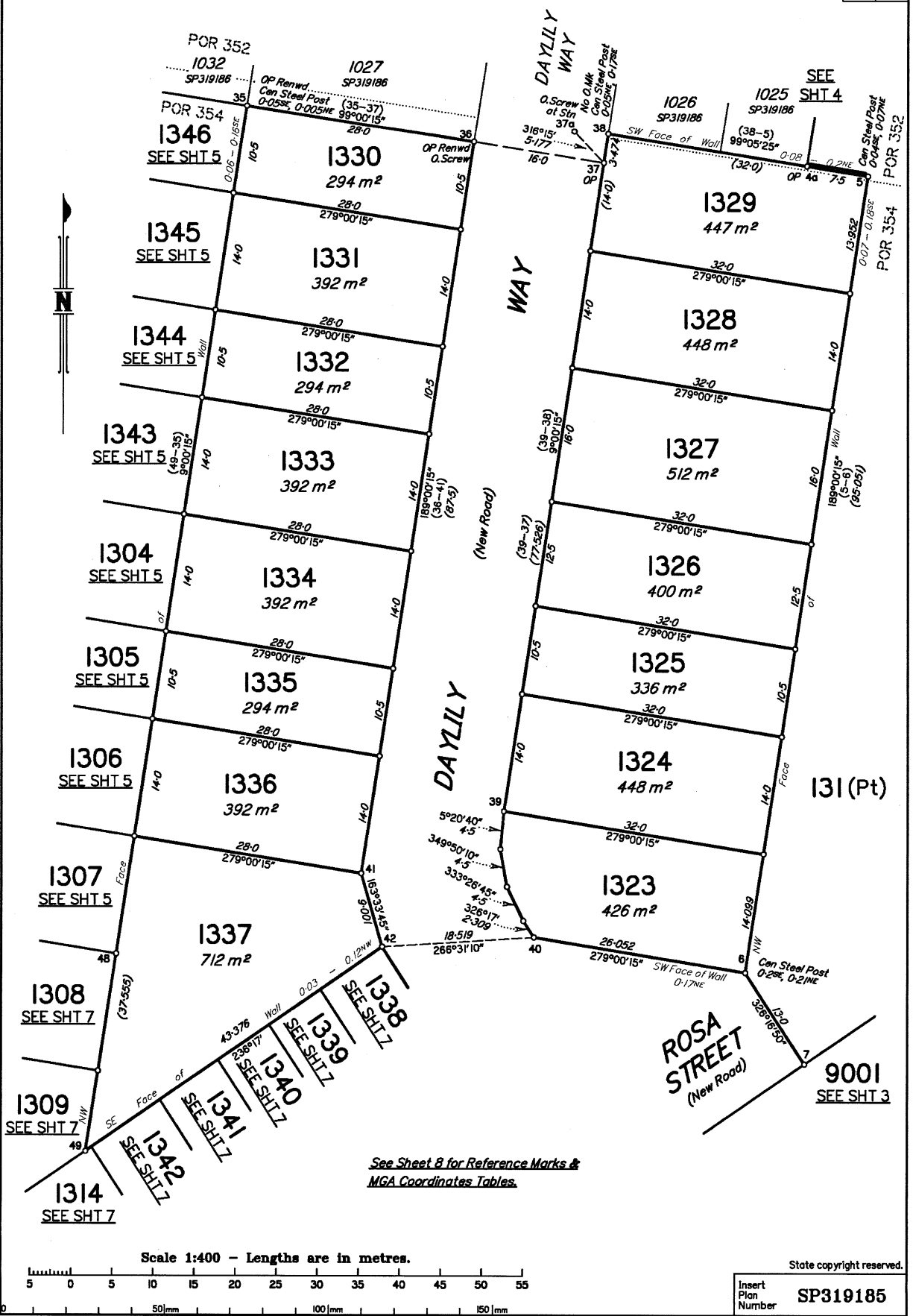


Scale 1:400 - Lengths are in metres.



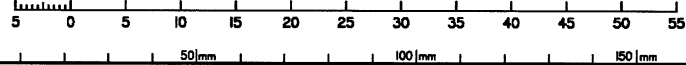
State copyright reserved.

Insert Plan Number **SP319185**



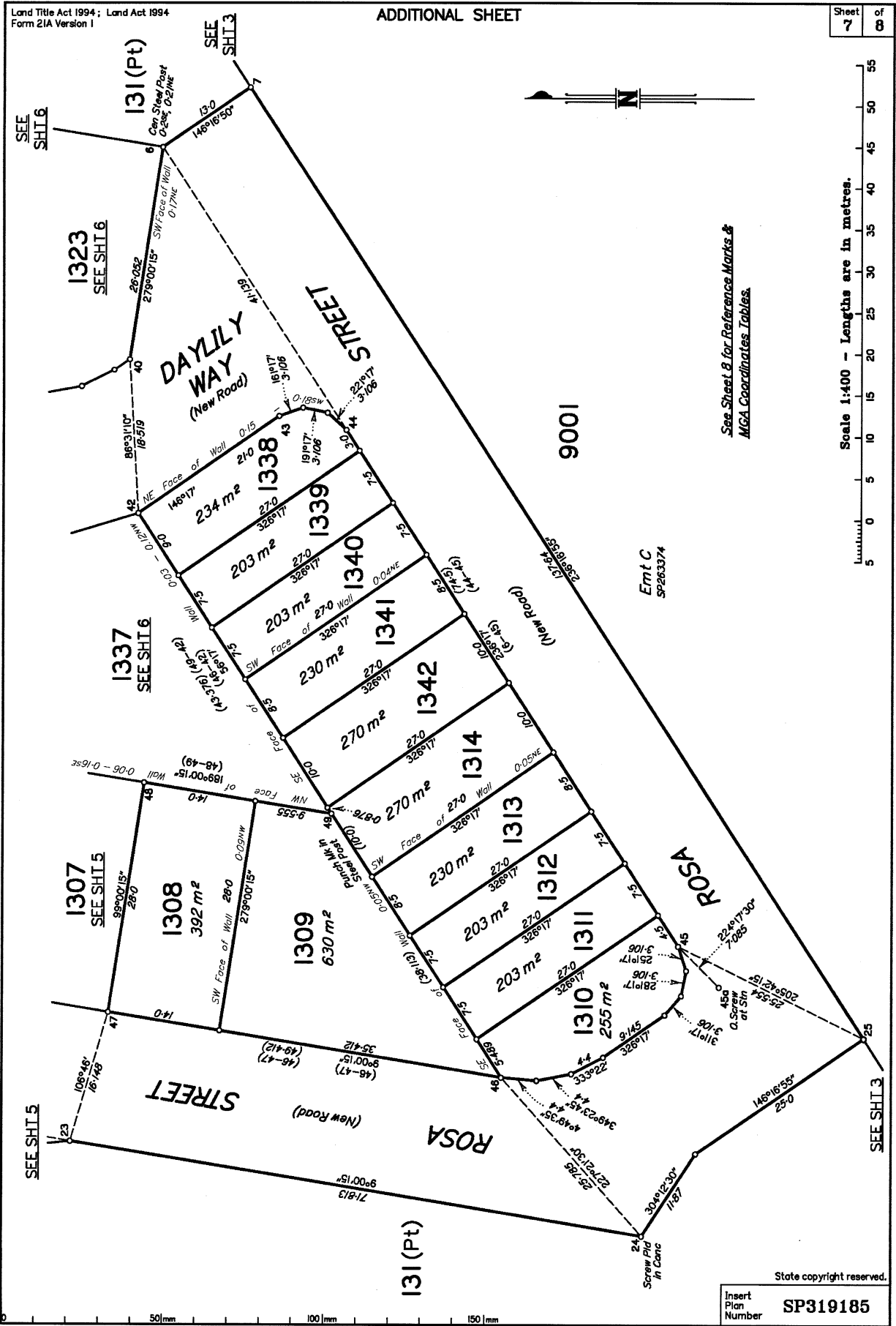
See Sheet 8 for Reference Marks & MGA Coordinates Tables.

Scale 1:400 - Lengths are in metres.



State copyright reserved.

Insert Plan Number SP319185

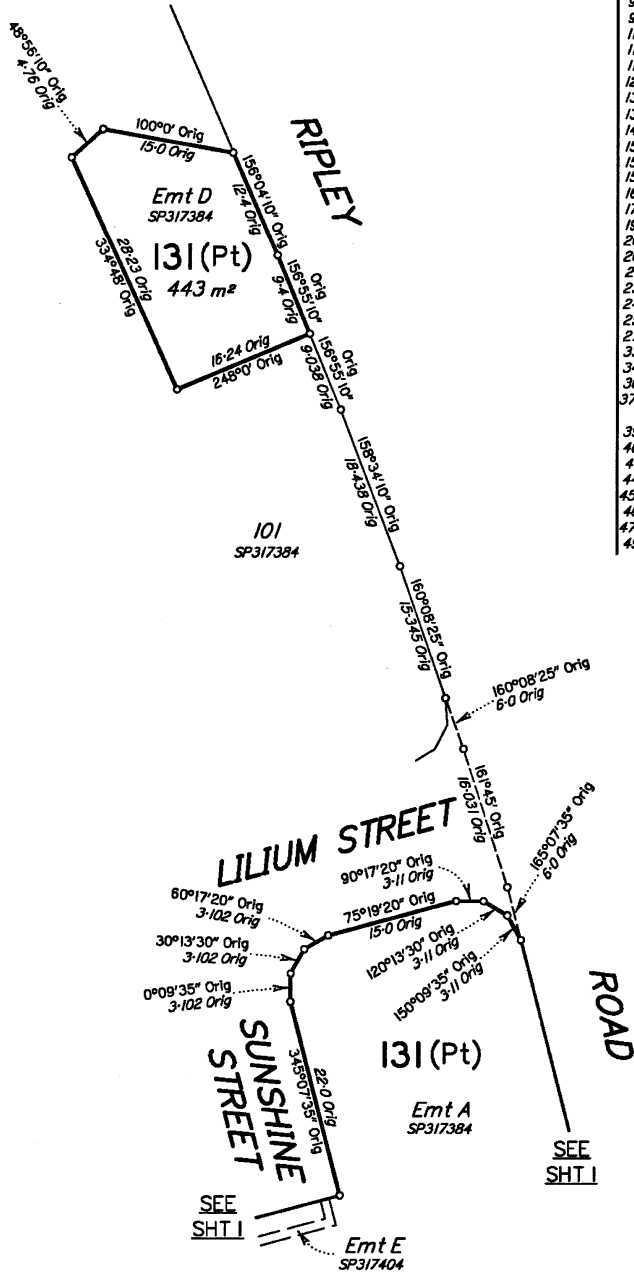


See Sheet 8 for Reference Marks & MGA Coordinates Tables.

Scale 1:400 - Lengths are in metres.

State copyright reserved.

Insert Plan Number
SP319185



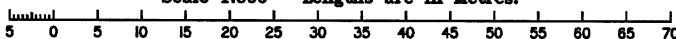
REFERENCE MARKS

STN	TO	REMARKS	BEARING	DIST
1	O.Screw in Kerb	6/1S319268	260°36'15"	12-73
2	O.Screw in Kerb	7/1S319268	304°09'	9-576
3	O.Screw in Kerb	29/1S319268	219°45'	4-756
4	O.Screw in Kerb	28/1S319268	359°03'	4-125
6	Screw in Kerb		198°14'	6-658
7	Screw in Kerb		242°08'30"	9-561
7a	OIP Gone	8/SP265858	166°24'	1-467
9	OIP	3/SP265858	197°58'	1-336
9	O.Screw in Conc	3/SP327109	127°16'30"	41-7
9	O.Screw in Conc	3/SP327109	9°50'45"	59-797
11	OIP	3a/RC815440	42°29'	1-007
11	OIP	7/1S206021	71°06'30"	2-849
11	OIP	12/SP327109	72°12'	4-864
12	O.Screw in Dway gone	6/1S261138	152°52'30"	20-397
13	O.Star Pkt	7/1S261138	312°09'	4-985
13	Screw in Kerb		114°59'30"	20-815
14	Star Pkt		270°39'30"	16-01
15	OIP	12/1S206021	179°37'30"	0-725
15	O.Star Pkt Gone	17/1S235873	126°47'55"	19-764
15	OIP (Not Searched)	4/1S308595	102°44'15"	27-496
16	O.Screw in Kerb	19/SP327109	162°47'30"	6-98
17	O.Screw in Kerb	20/SP327109	85°10'30"	9-194
19	Screw in Kerb		114°57'	6-11
20	O.Screw in Kerb	18/SP317404	21°12'	9-46
20	O.Screw in Kerb	18/SP317404	322°54'	18-87
21	Screw in Conc		294°01'	7-75
23	Screw in Kb		24°26'	6-77
24	Screw in Kb		21°30'	19-055
25	Screw in Kerb		33°56'	11-92
27	Screw in Kerb		173°52'	6-806
33	O.Screw in Kerb	18/1S319268	54°53'	5-668
34	O.Screw in Kerb	19/1S319268	277°52'	4-12
36	O.Screw in Kerb	24/1S319268	98°22'30"	4-105
37a	O.Screw in Kerb (New Conn)	25/1S319268	At	Stn
39	Screw in Kerb		235°47'	5-474
40	Screw in Kerb		150°15'30"	18-757
41	Screw in Kerb		67°37'	5-3
44	Screw in Kerb		78°07'	6-297
45a	Screw in Kerb		At	Stn
46	Screw in Kerb		196°24'	11-226
47a	Screw in Kerb		316°52'30"	5-164
49	OIP Dist (New Ref)	16/1S235873	13°46'	0-17

M.G.A. COORDINATES GDA-2020

STATION	EASTING	NORTHING	ZONE	P.U.	LINEAGE	METHOD	REMARKS
37a	478531-798	6939201-645	56	0-025	Derived	Network RTK	O.Screw in Kerb
45a	478451-546	6939033-218	56	0-025	Derived	Network RTK	Screw in Kerb

Scale 1:500 - Lengths are in Metres.



State copyright reserved.

Insert Plan Number **SP319185**