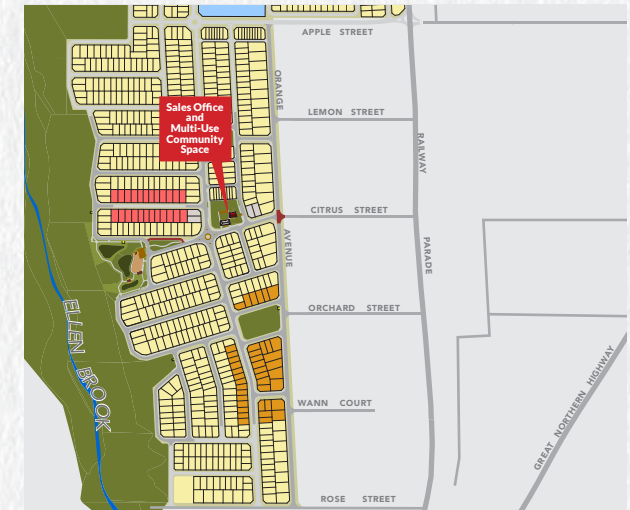




Clementine

UPPER SWAN



- Stage 8A Release
- Future Release
- Previous Release

Legend

- Brick Paving
- Red Asphalt
- Footpath
- Side Entry Pit
- Water Hydrant
- Water Valve
- BAL 12.5
- Road Level
- Drainage Grate
- Mini Pillar and connection
- Universal Pillar and connection
- Western Power Padmount Site
- Street Light
- Fibre Optic Network Line/Pit
- Lot Level
- Drainage manhole
- Sewer Housing Connection/Manhole
- Limestone Retaining Wall
- Drainage Housing Connection
- Subsoil Drainage
- Footing Requirement Class 'S'
- Footing Requirement Class 'A'

For all enquiries, please contact
9368 9173

Satterley Property Group Pty Ltd
Level 3, 27-31 Troode Street, West Perth WA 6005 ABN 38 009 054 979