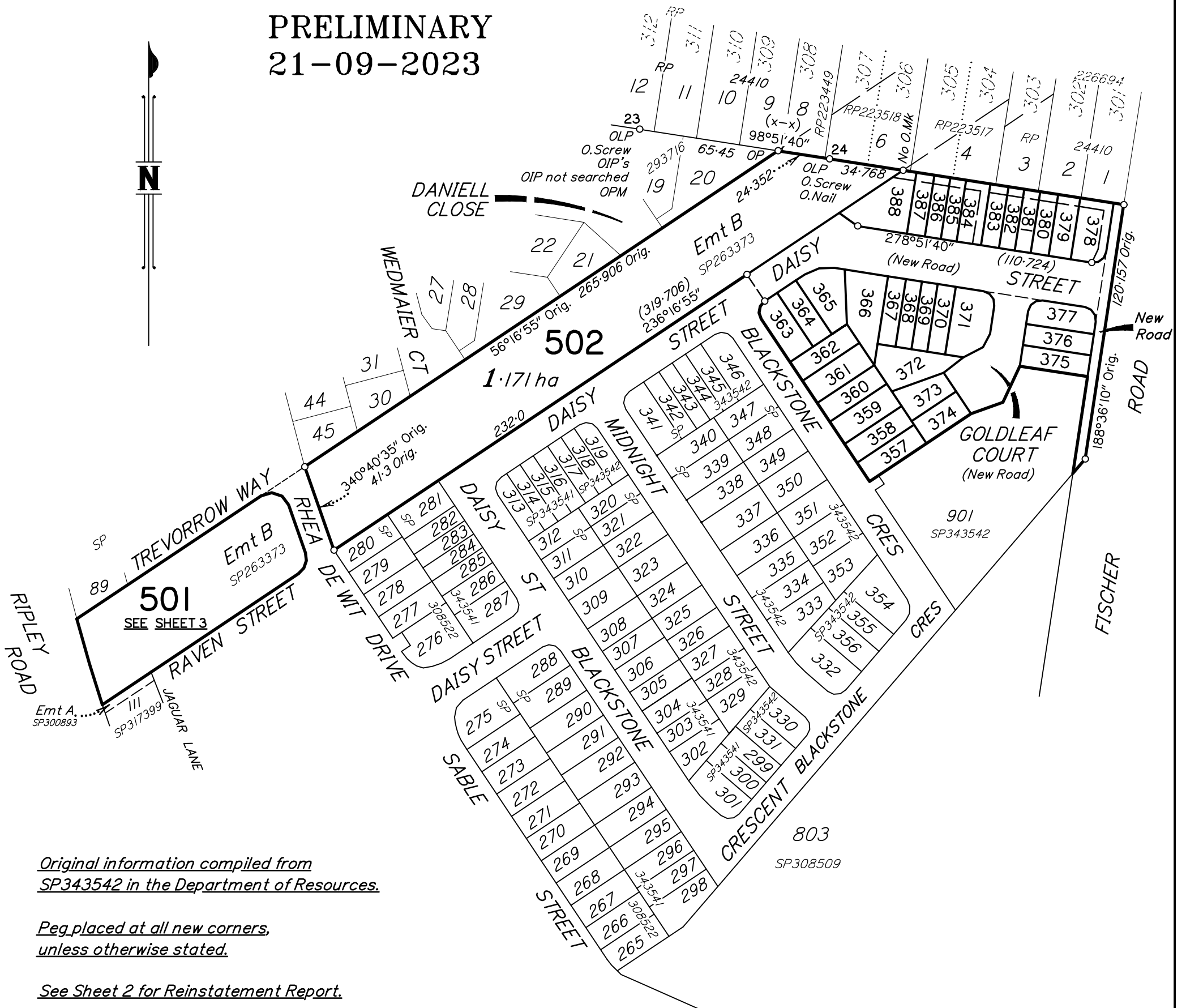


PRELIMINARY
21-09-2023



Original information compiled from
SP343542 in the Department of Resources.

Peg placed at all new corners,
unless otherwise stated.

See Sheet 2 for Reinstatement Report.

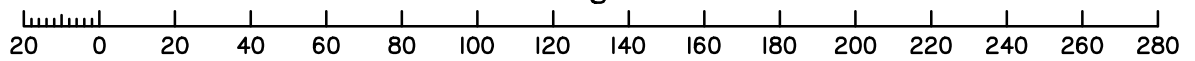
See Sheet 3 for Reference Marks &
MGA Coordinate Tables.

Area of New Road

5131 m²

Refer Sheet 3 for Lot 501.
Refer Sheet 4 for Lots 357-374 & 385-388.
Refer Sheet 5 for Lots 375-384.

Scale 1:2000 - Lengths are in Metres.



JFP Urban Consultants Pty. Ltd. (ACN 050 414 045) hereby certify that the land comprised in this plan was surveyed by the corporation, by Michael David Balfour, Surveying Graduate, for whose work the corporation accepts responsibility, under the supervision of Christopher John McCORKINDALE, Cadastral Surveyor, and that the plan is accurate, that the said survey was performed in accordance with the Survey and Mapping Infrastructure Act 2003 and Surveyors Act 2003 and associated Regulations and Standards and that the said survey was completed on //.

.....
Authorised Signatory

Plan of Lots 357-388, 501 and 502 &
Emts C-M in Lots 378-388 Respectively.

Cancelling Lot 501 on SP343542

LOCAL GOVERNMENT: *IPSWICH CITY* LOCALITY: *RIPLEY*

Meridian: *MGA Zone 56 Vide Network RTK*

Survey Records: *No*

Scale: *1:2000*

Format: *STANDARD*



SP343543

Date:.....

State copyright reserved.

**WARNING : Folded or Mutilated Plans will not be accepted.
Plans may be rolled.
Information may not be placed in the outer margins.**

(Dealing No.)

4. Lodged by

(Include address, phone number, reference, and Lodger Code)

I. Existing		Created		
Title Reference	Description	New Lots	Road	Secondary Interests
	Lot 501 on SP343542	357-388, 501 & 502	New Rd	Emts C-M

MORTGAGE ALLOCATIONS

Mortgage	Lots Fully Encumbered	Lots Partially Encumbered
	357-388, 501 & 502	_____

ENCUMBRANCE EASEMENT ALLOCATIONS

Easement	Lots to be Encumbered
715860919 (Emt B on SP263373)	501

REINSTATEMENT REPORT

*Plans Searched : SP300893, SP263373,
SP308538 & SP317381*

*All original boundaries reinstated from
original corner marks, reference marks
and deed dimensions.*

357-388, 501 & 502	POR 353
Lots	Orig

2. Orig Grant Allocation :

3. References :
Dept File :
Local Govt :
Surveyor : B3742S-77

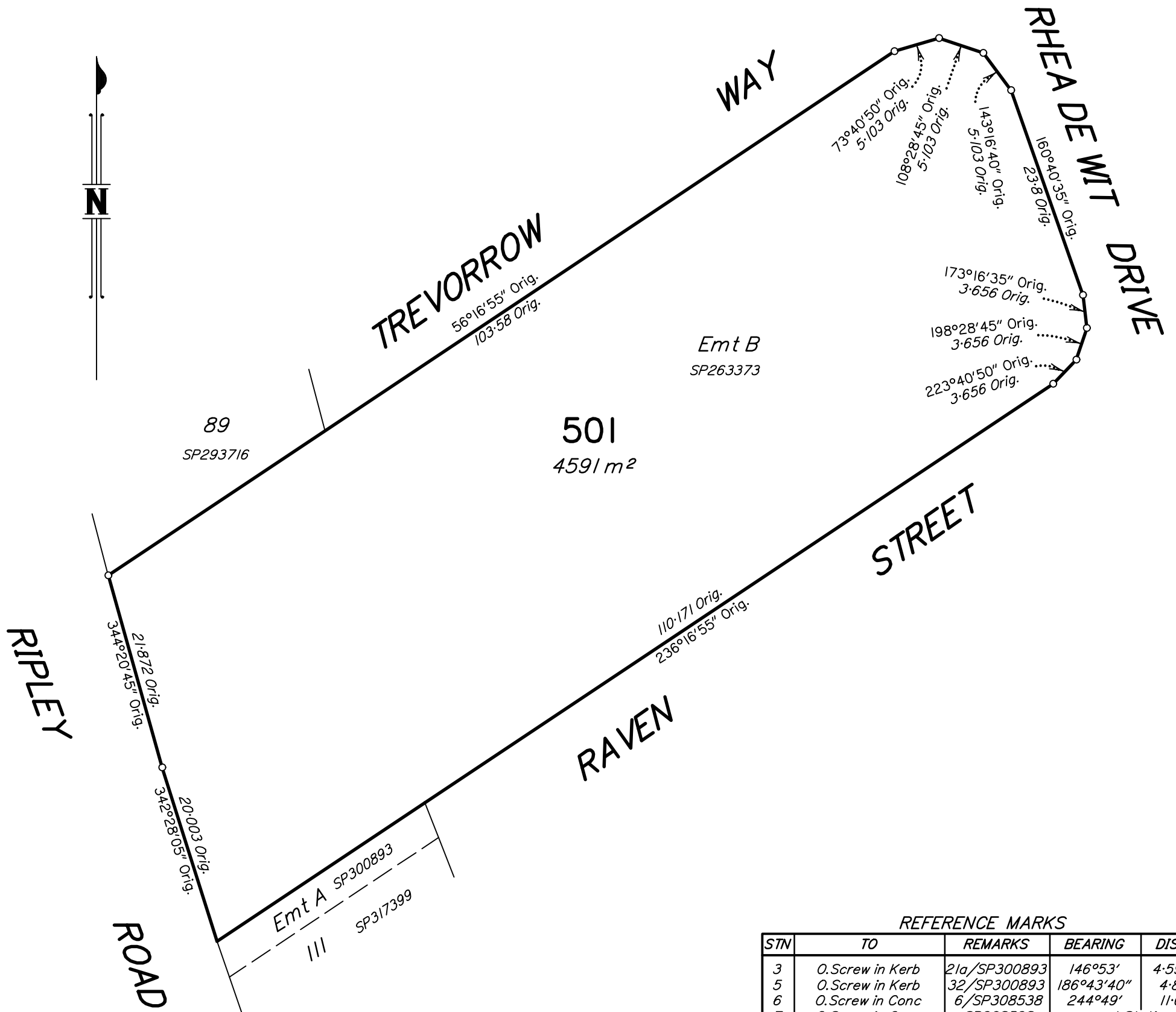
**PRELIMINARY
21-09-2023**

5. Passed & Endorsed :
JFP Urban Consultants Pty Ltd
By: A.C.N. 050 414 045
Date :
Signed :
Designation : Cadastral Surveyor

6. Building Format Plans only.
I certify that :
* As far as it is practical to determine, no part of the building shown on this plan encroaches onto adjoining lots or road;
* Part of the building shown on this plan encroaches onto adjoining * lots and road
.....
Cadastral Surveyor/Director* Date
*delete words not required

7. Lodgement Fees :
Survey Deposit \$
Lodgement \$
.....New Titles \$
Photocopy \$
Postage \$
TOTAL \$

8. Insert Plan Number **SP343543**



REFERENCE MARKS

STN	TO	REMARKS	BEARING	DIST
3	O. Screw in Kerb	21a/SP300893	146°53'	4.598
5	O. Screw in Kerb	32/SP300893	186°43'40"	4.81
6	O. Screw in Conc	6/SP308538	244°49'	11.0
7	O. Screw in Conc	SP308538	at Station	
8	O. Screw on Wall	15/SP308509	95°45'	0.595
8	O. Screw in Conc	8/SP308538	250°54'	2.293

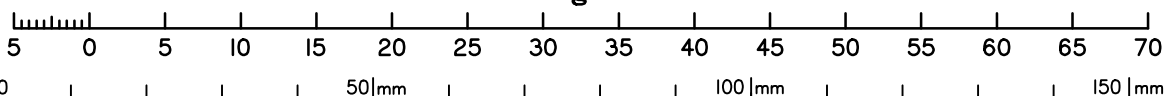
See Sheet 2 for Reinstatement Report.

Original information compiled from
SP343542 in the Department of Resources.

Peg placed at all new corners,
unless otherwise stated.

PRELIMINARY
21-09-2023

Scale 1:500 - Lengths are in Metres.

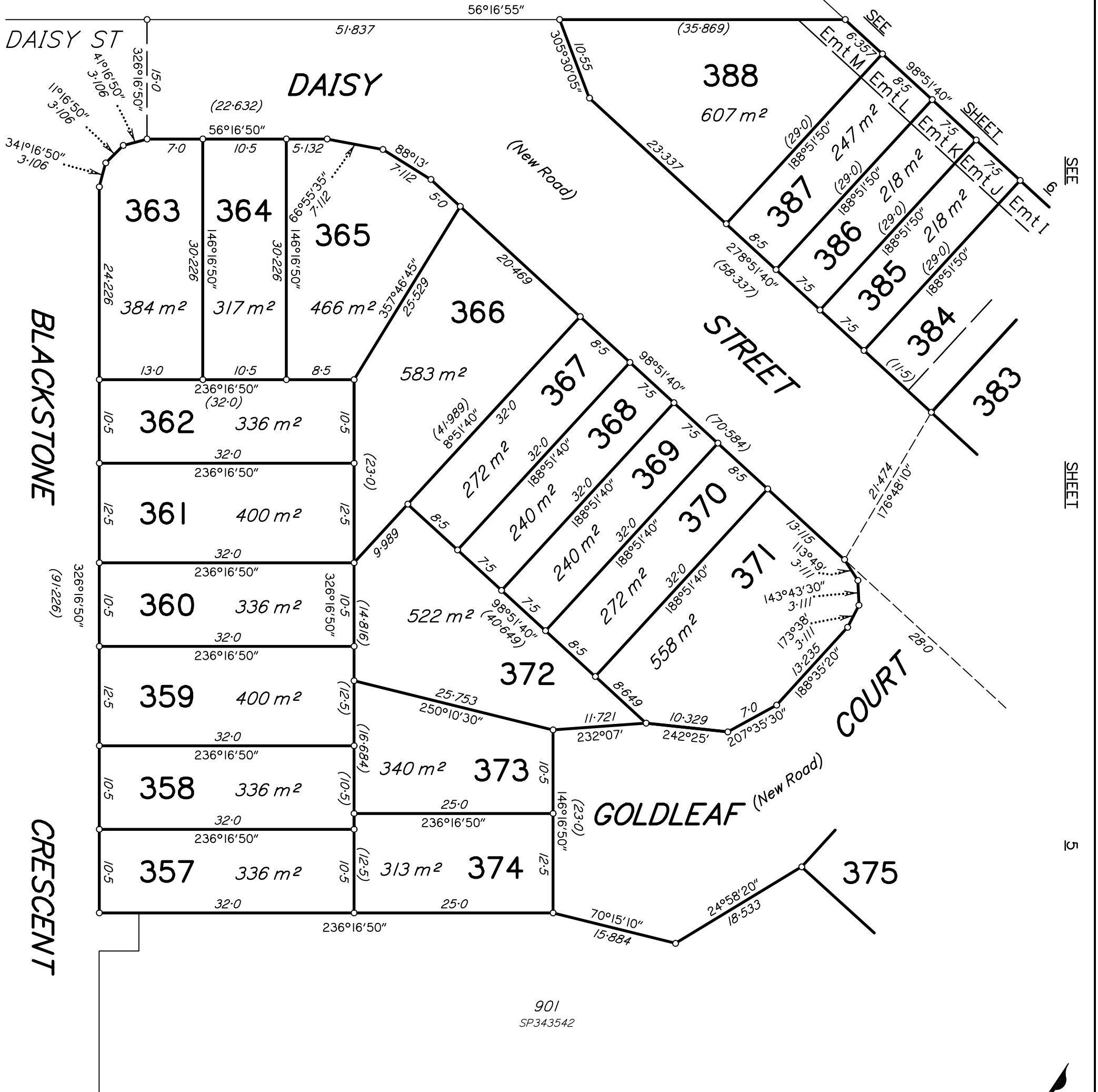


State copyright reserved.

Insert Plan Number **SP343543**

PRELIMINARY
21-09-2023

502
SEE SHEET 1



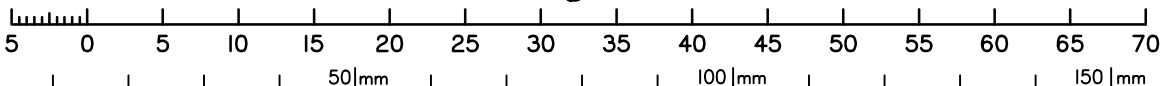
Original information compiled from
SP343542 in the Department of Resources.

Peg placed at all new corners,
unless otherwise stated.

See Sheet 2 for Reinstatement Report.

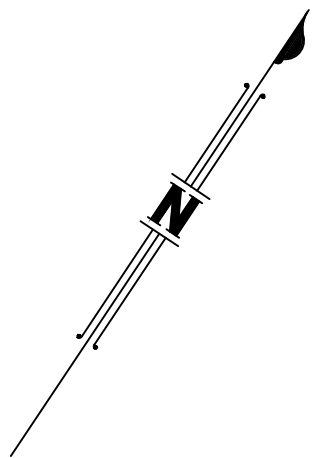
See Sheet 3 for Reference Marks &
MGA Coordinate Tables.

Scale 1:500 - Lengths are in metres.



State copyright reserved.

Insert Plan Number **SP343543**



*Original information compiled from
SP343542 in the Department of Resources.*

*Peg placed at all new corners,
unless otherwise stated.*

See Sheet 2 for Reinstatement Report.

*See Sheet 3 for Reference Marks &
MGA Coordinate Tables.*

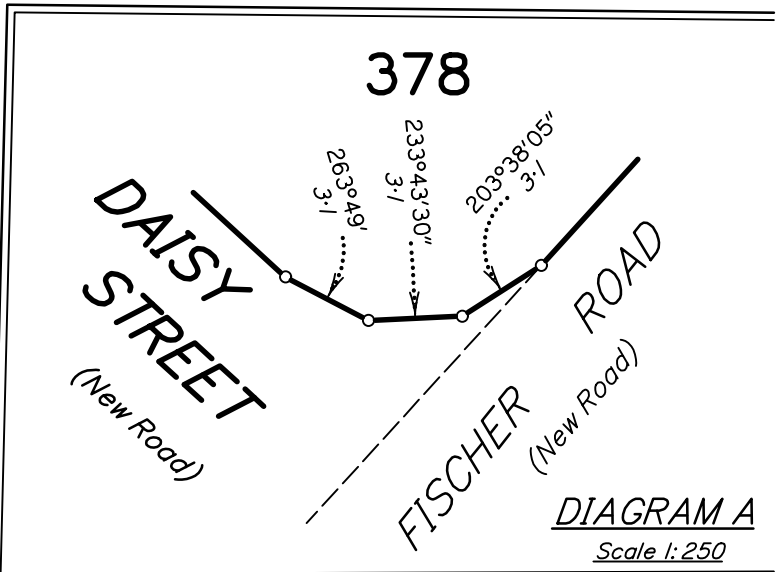
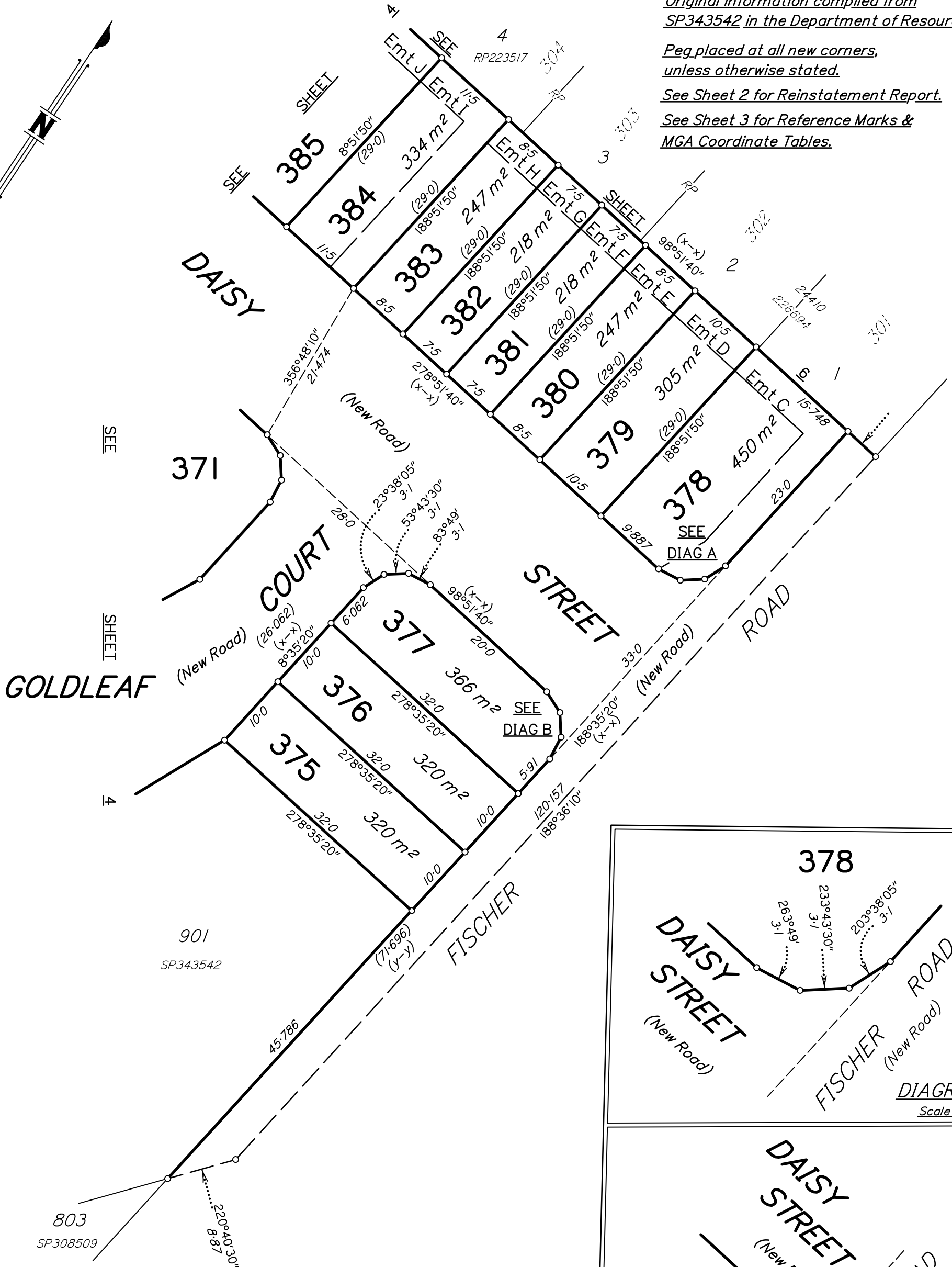
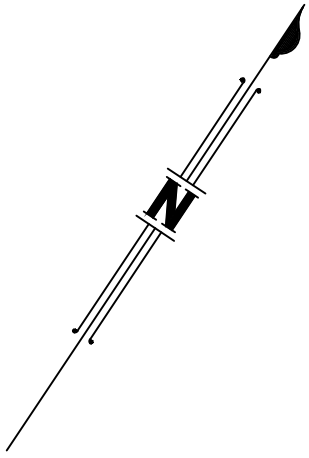


DIAGRAM A
Scale 1:250

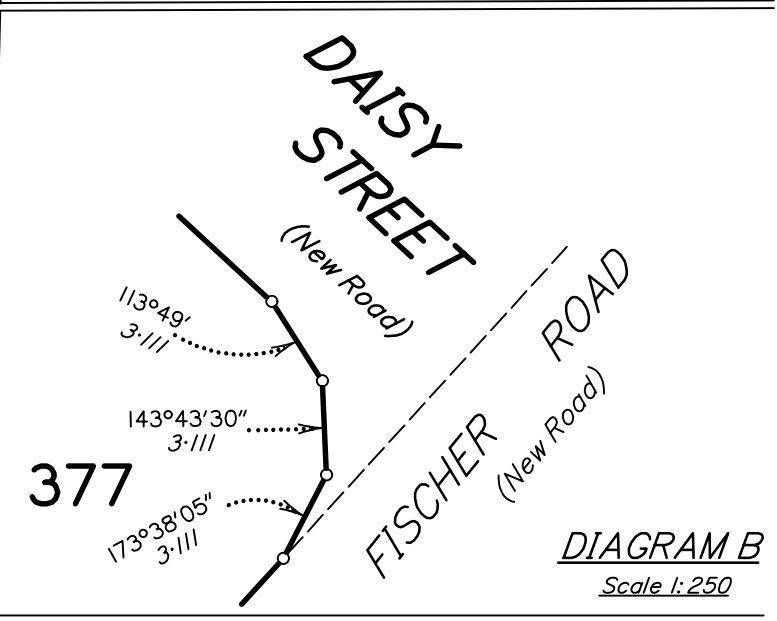
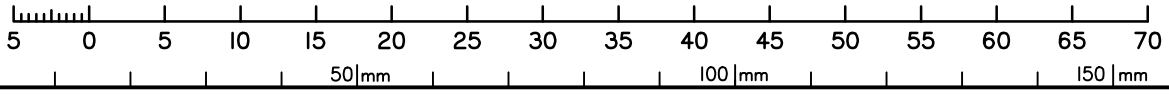


DIAGRAM B
Scale 1:250

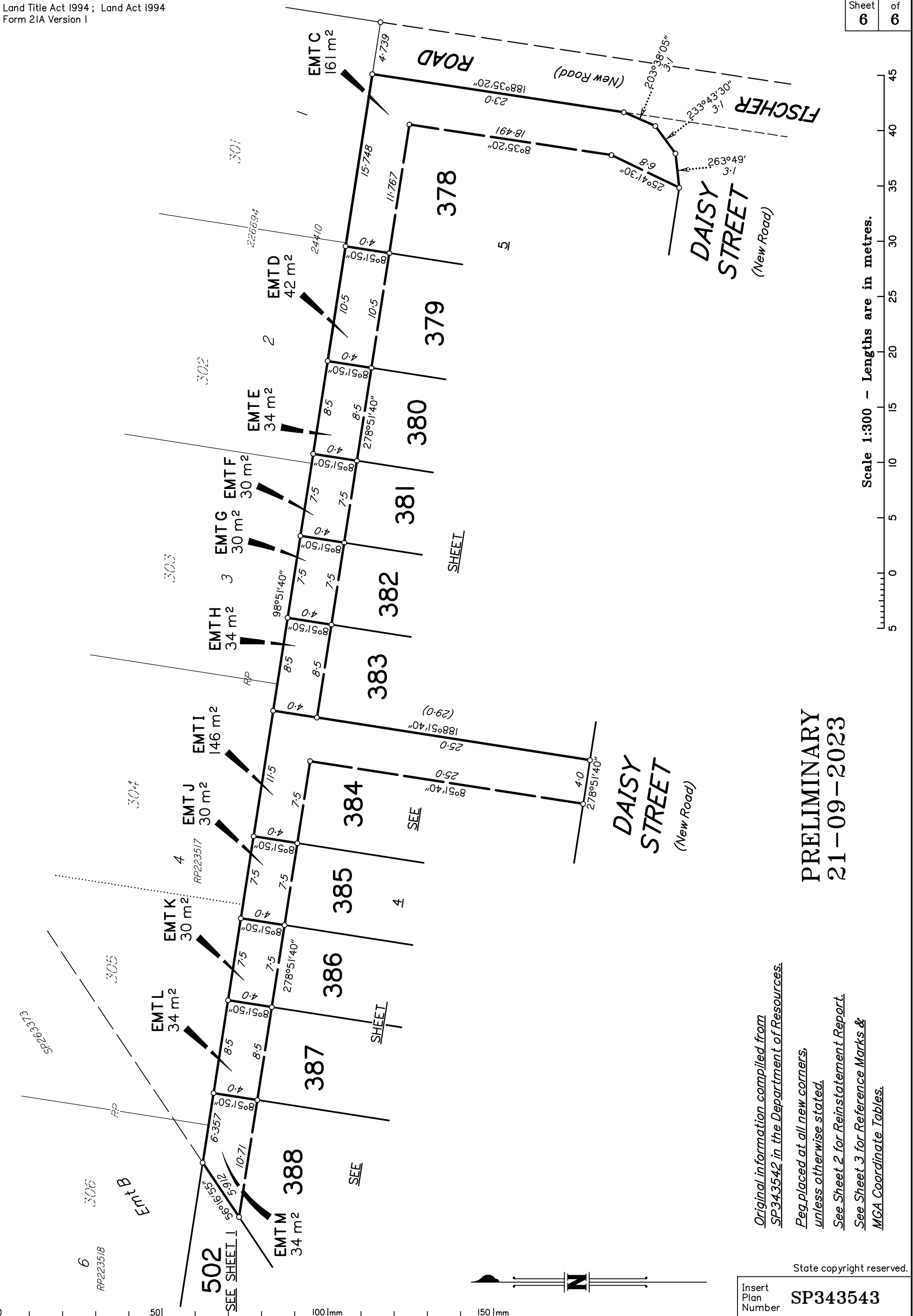
**PRELIMINARY
21-09-2023**

Scale 1:500 - Lengths are in metres.

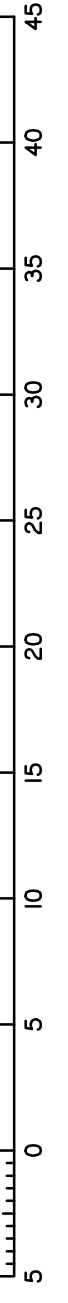


State copyright reserved.

Insert Plan Number **SP343543**



Scale 1:300 - Lengths are in metres.



**PRELIMINARY
21-09-2023**

*Original information compiled from
SP343542 in the Department of Resources.
Peg placed at all new corners,
unless otherwise stated.
See Sheet 2 for Reinstatement Report.
See Sheet 3 for Reference Marks &
MGA Coordinate Tables.*

State copyright reserved.

Insert Plan Number **SP343543**



502
SEE SHEET 1

503
SEE SHEET 1

SEE SHEET 1

SEE SHEET 1

SEE SHEET 1

SEE SHEET 1

SEE SHEET 1

SEE SHEET 1

SEE SHEET 1

