

LOCAL DEVELOPMENT PLAN PROVISIONS

- The requirements of the R-Codes and the R-MD Codes (as applied through the City's Medium-Density Housing Standards (R-MD) Local Planning Policy) are varied as shown on this plan.
- The requirements of the R-Codes, R-MD Codes and City of Wanneroo District Planning Scheme No. 2 shall be satisfied in all other matters.
- Consultation with adjoining or other landowners to achieve a variation provided for by the Local Development Plan (LDP) is not required.
- Minor Variations to the requirements of this LDP may be approved by the City of Wanneroo as part of a Building Application.

DWELLING ORIENTATION AND FENCING

- Where specified on the plan, the dwelling is to address this frontage with clearly defined entry points visible and accessed from this frontage. Street setback and front fence requirements pursuant to the R-Codes are to be applied to this frontage.

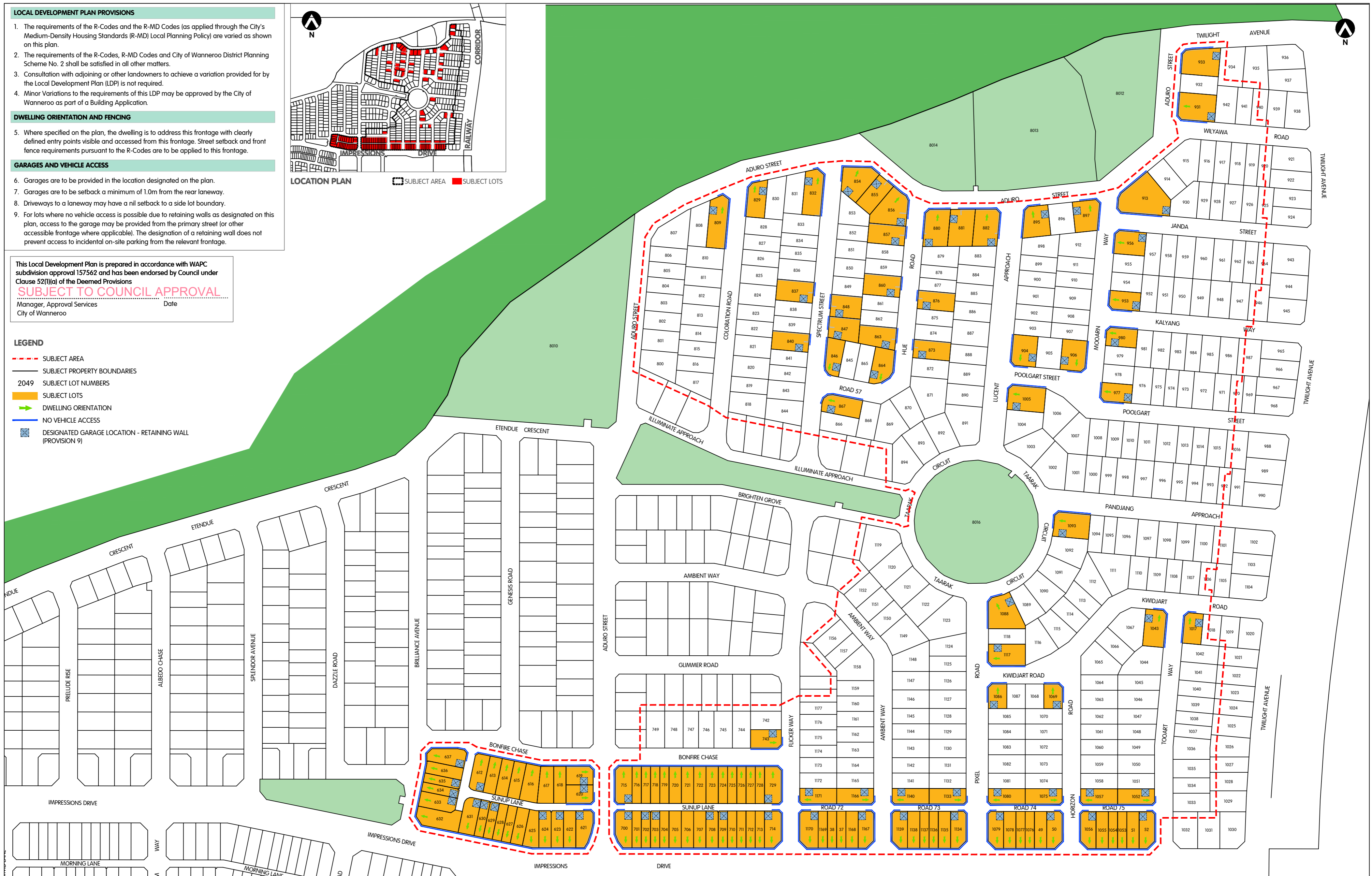
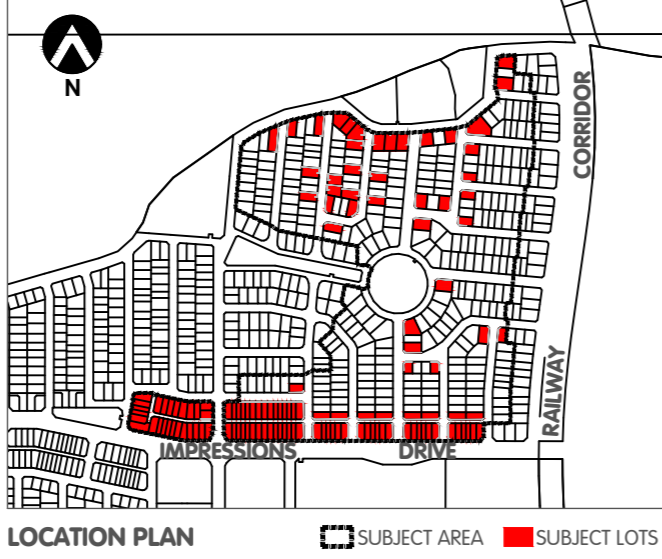
GARAGES AND VEHICLE ACCESS

- Garages are to be provided in the location designated on the plan.
- Garages are to be setback a minimum of 1.0m from the rear laneway.
- Driveways to a laneway may have a nil setback to a side lot boundary.
- For lots where no vehicle access is possible due to retaining walls as designated on this plan, access to the garage may be provided from the primary street (or other accessible frontage where applicable). The designation of a retaining wall does not prevent access to incidental on-site parking from the relevant frontage.

This Local Development Plan is prepared in accordance with WAPC subdivision approval 157562 and has been endorsed by Council under Clause 52(1)(a) of the Deemed Provisions
SUBJECT TO COUNCIL APPROVAL
 Manager, Approval Services Date
 City of Wanneroo

LEGEND

- - - SUBJECT AREA
- SUBJECT PROPERTY BOUNDARIES
- 2049 SUBJECT LOT NUMBERS
- SUBJECT LOTS
- ➔ DWELLING ORIENTATION
- NO VEHICLE ACCESS
- ⊠ DESIGNATED GARAGE LOCATION - RETAINING WALL (PROVISION 9)



CADASTRAL INFORMATION
 SOURCE: MNG
 YWMDD: 230710
 DWG REF: 97504lots-9999ce-PCG94.dwg
 PROJECTION: PCG94

HATCH | RobertsDay

AERIAL PHOTOGRAPHY
 SOURCE: NA
 YWMDD: NA

SIZE A2 1:2000

0 metres 20 40 60 80 100

B	UPDATE PLAN/PROV	230803	TD	DP	JOB CODE	SERVICE	DOC.TYPE	DRAW NO.	REV.
A	FIRST ISSUE	230724	TD	DP	SAT EGL	DES	DWG	440	B
REV	DESCRIPTION	YWMDD	DRAWN	APPRD					

LOCAL DEVELOPMENT PLAN No. 5
 North Eglinton
 City of Wanneroo

DRAFT

DISCLAIMER: ISSUED FOR DESIGN INTENT ONLY. ALL AREAS AND DIMENSIONS ARE SUBJECT TO DETAIL DESIGN AND SURVEY