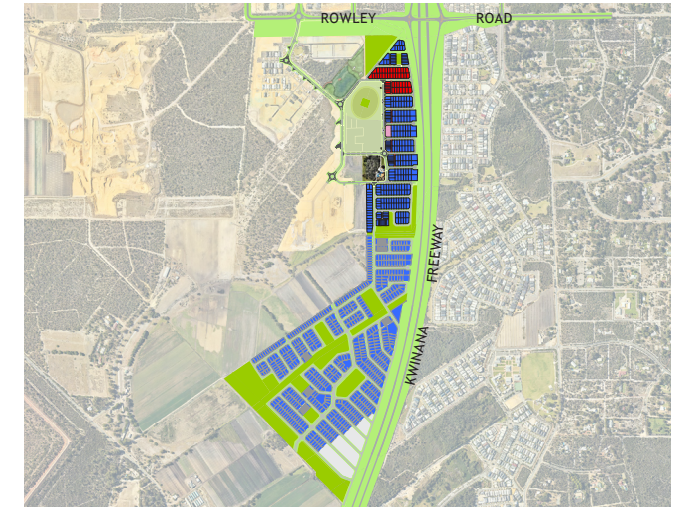


# FLORENCE

# STAGE 3A



**Stage 3A**   **Future Release**   **Previous Release**

**LEGEND**

Brick Paving-Charcoal	Sewer Housing Connection/Manhole	Retaining Wall
Brick Paving-Silver	Mini Pillar and connection	Sound Wall
Red Asphalt	Universal Pillar and connection	Footing for Sound Wall
Footpath	Below Ground Service Pit and connection	Lot Level
Side Entry Pit	Western Power Padmount Site	Road Level
Drainage Grate	Street Light & Street Light Road Widening	Tree Pit & Tree
Drainage Manhole	Water Hydrant	Fibre Optic Network Line/ Pit
Drainage Soakwell	Rain Garden	<b>Indicative Bushfire Attack Levels (BAL-)</b>
Water Connection		29
Water Valve		19
Garage Location		12.5
		<b>Quiet House Design</b>
		Noise Package A
		Noise Package B
		Noise Package C

(Garages must be located on the designated garage location to avoid conflict with services, streetlights, street trees, etc.)

**For all enquiries, please contact Richard Cull on 9368 9170**

This plan is intended to be indicative only and may not accurately or fully depict the actual or final development at present or in the future. It is not, and may not be taken as being, a representation in any respect by Satterley Property Group Pty Ltd, any seller or landowner and or any of their respective officers, employees, agents or advisers or anybody else.