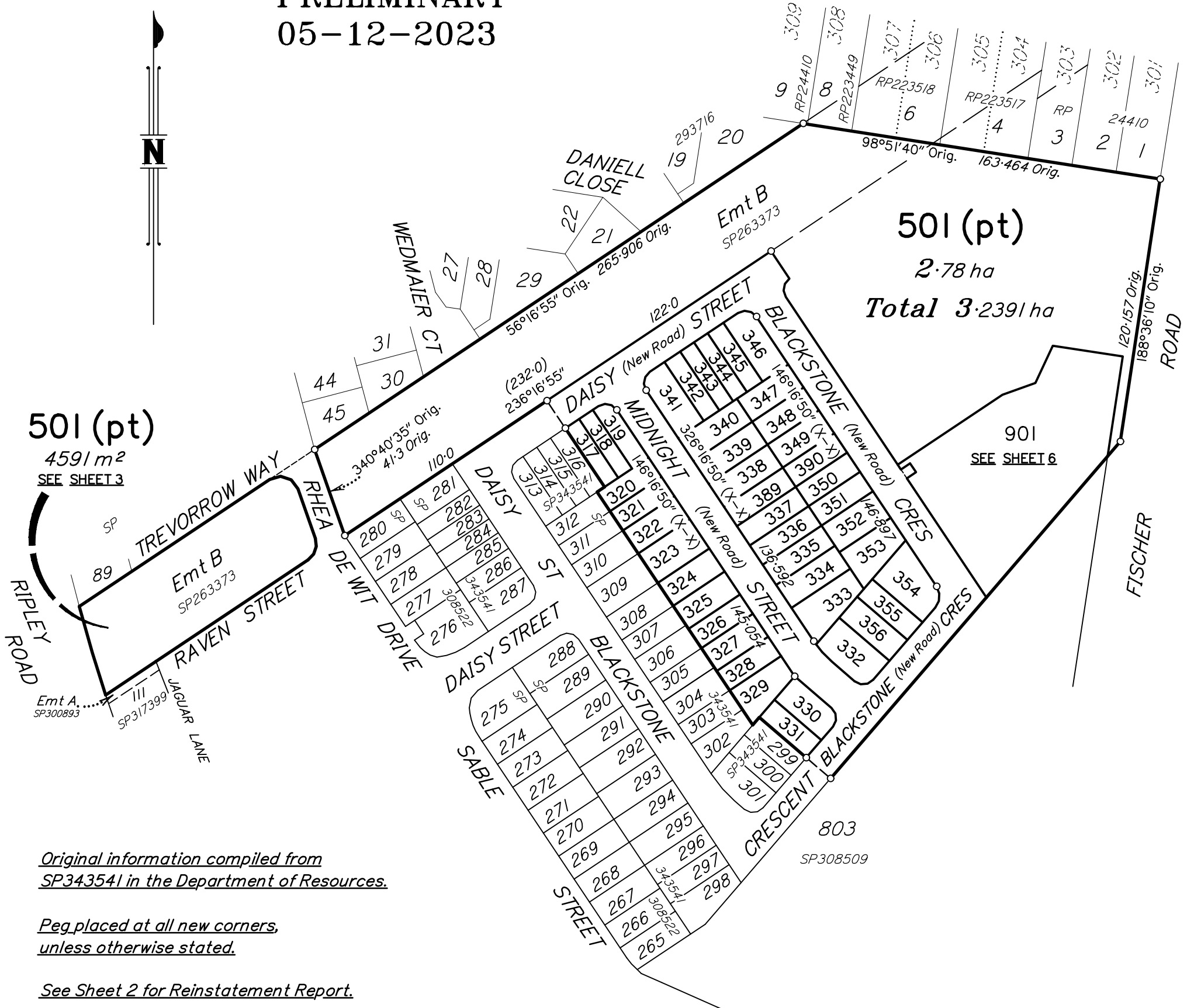


PRELIMINARY
05-12-2023



501 (pt)
4591 m²
SEE SHEET 3

501 (pt)
2.78 ha
Total 3.2391 ha

Original information compiled from
SP343541 in the Department of Resources.

Peg placed at all new corners,
unless otherwise stated.

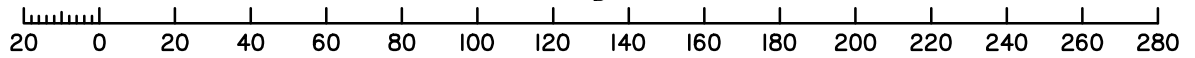
See Sheet 2 for Reinstatement Report.

See Sheet 3 for Reference Marks &
MGA Coordinate Tables.

Area of New Road
8853 m²

Refer Sheet 3 for Lot 501(pt).
Refer Sheet 4 for Lots 317-323 & 338-349, 389 & 390.
Refer Sheet 5 for Lots 324-337 & 350-356.
Refer Sheet 6 for Lots 901.

Scale 1:2000 - Lengths are in Metres.



0 20 40 60 80 100 120 140 160 180 200 220 240 260 280
50mm 100mm 150mm State copyright reserved.

JFP Urban Consultants Pty. Ltd. (ACN 050 414 045) hereby certify that the land comprised in this plan was surveyed by the corporation, by Timothy Neil PATRICK, Surveying Associate, for whose work the corporation accepts responsibility, under the supervision of Christopher John McCORKINDALE, Cadastral Surveyor, and that the plan is accurate, that the said survey was performed in accordance with the Survey and Mapping Infrastructure Act 2003 and Surveyors Act 2003 and associated Regulations and Standards and that the said survey was completed on //.

Plan of Lots 317-356, 389 & 390, 501 and 901.

Scale: 1:2000

Format: STANDARD

Cancelling Lot 501 on SP343541

LOCAL GOVERNMENT: IPSWICH CITY LOCALITY: RIPLEY

Meridian: MGA Zone 56 Vide Network RTK

Survey Records: No



SP343542

.....
Authorised Signatory

Date.....

WARNING : Folded or Mutilated Plans will not be accepted.
Plans may be rolled.
Information may not be placed in the outer margins.

(Dealing No.)

4. Lodged by

(Include address, phone number, reference, and Lodger Code)

| I. Existing | | Created | | |
|-----------------|---------------------|-----------------------------|--------|---------------------|
| Title Reference | Description | New Lots | Road | Secondary Interests |
| | Lot 501 on SP343541 | 317-356,389, 390, 501 & 901 | New Rd | _____ |

MORTGAGE ALLOCATIONS

| Mortgage | Lots Fully Encumbered | Lots Partially Encumbered |
|----------|-----------------------|---------------------------|
| | 317-356, 389 & 390. | _____ |

ENCUMBRANCE EASEMENT ALLOCATIONS

| Easement | Lots to be Encumbered |
|----------------------------------|-----------------------|
| 715860919 (Emt B on SP263373) | 501 |

REINSTATEMENT REPORT

Plans Searched : SP300893, SP263373, SP308538 & SP317381

All original boundaries reinstated from original corner marks, reference marks and deed dimensions.

Emt A on SP343541 (xxxxxxx) to be surrendered prior to the registration of this plan.

| | |
|------------------------------|---------|
| 317-356, 389, 390, 501 & 901 | POR 353 |
| Lots | Orig |

2. Orig Grant Allocation :

3. References :
Dept File :
Local Govt :
Surveyor : B3742S-77

PRELIMINARY
05-12-2023

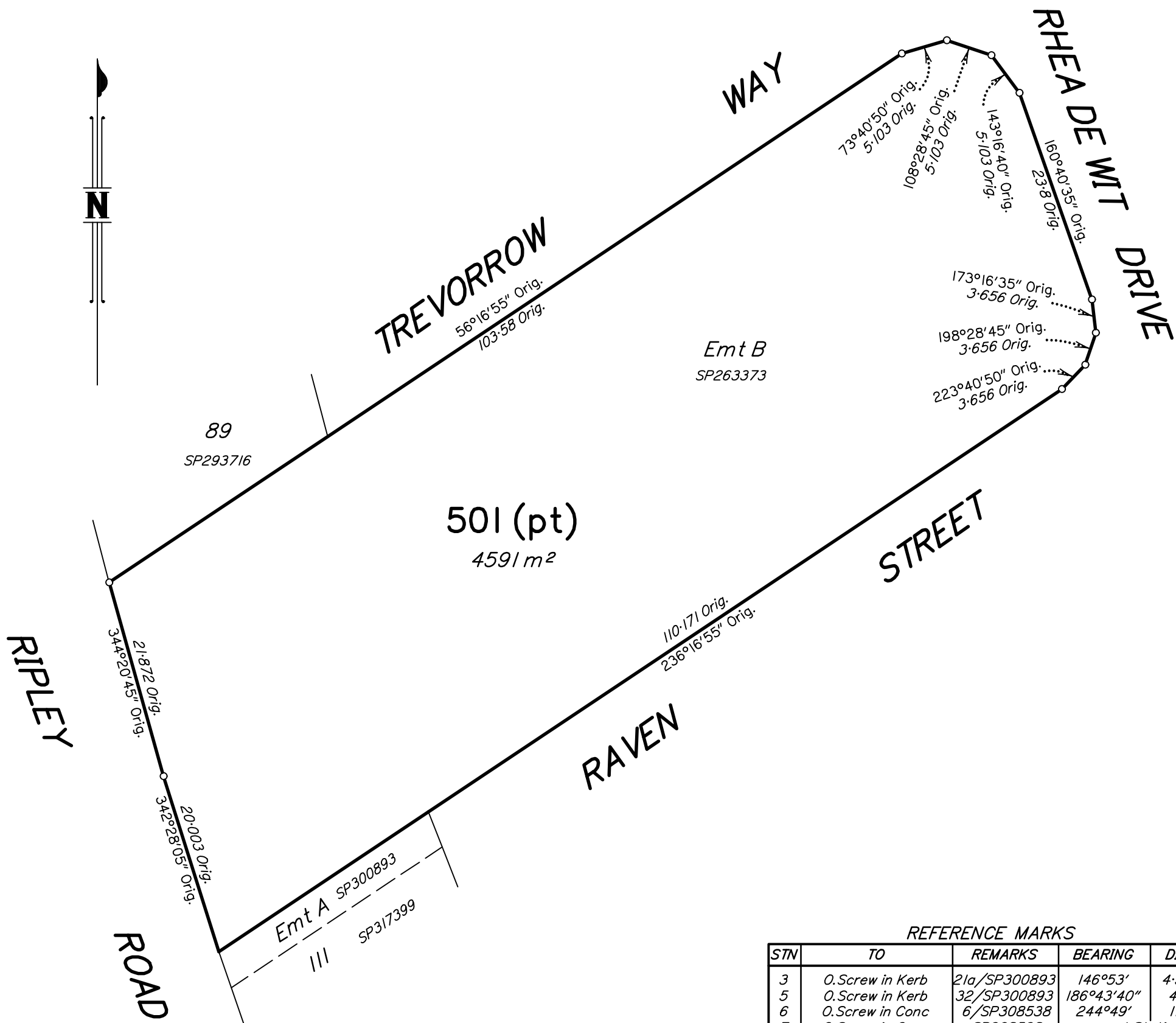
5. Passed & Endorsed :
JFP Urban Consultants Pty Ltd
By: A.C.N. 050 414 045
Date :
Signed :
Designation : Cadastral Surveyor

6. Building Format Plans only.
I certify that :
* As far as it is practical to determine, no part of the building shown on this plan encroaches onto adjoining lots or road;
* Part of the building shown on this plan encroaches onto adjoining * lots and road
.....
Cadastral Surveyor/Director* Date
*delete words not required

7. Lodgement Fees :

| | |
|-----------------|----------|
| Survey Deposit | \$ |
| Lodgement | \$ |
|New Titles | \$ |
| Photocopy | \$ |
| Postage | \$ |
| TOTAL | \$ |

8. Insert Plan Number **SP343542**



REFERENCE MARKS

| STN | TO | REMARKS | BEARING | DIST |
|-----|------------------|--------------|------------|-------|
| 3 | O. Screw in Kerb | 21a/SP300893 | 146°53' | 4.598 |
| 5 | O. Screw in Kerb | 32/SP300893 | 186°43'40" | 4.81 |
| 6 | O. Screw in Conc | 6/SP308538 | 244°49' | 11.0 |
| 7 | O. Screw in Conc | SP308538 | at Station | |
| 8 | O. Screw on Wall | 15/SP308509 | 95°45' | 0.595 |
| 8 | O. Screw in Conc | 8/SP308538 | 250°54' | 2.293 |

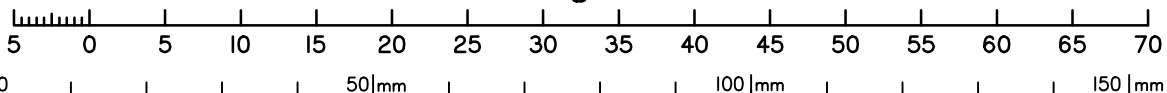
See Sheet 2 for Reinstatement Report.

Original information compiled from SP343541 in the Department of Resources.

Peg placed at all new corners, unless otherwise stated.

PRELIMINARY
05-12-2023

Scale 1:500 - Lengths are in Metres.



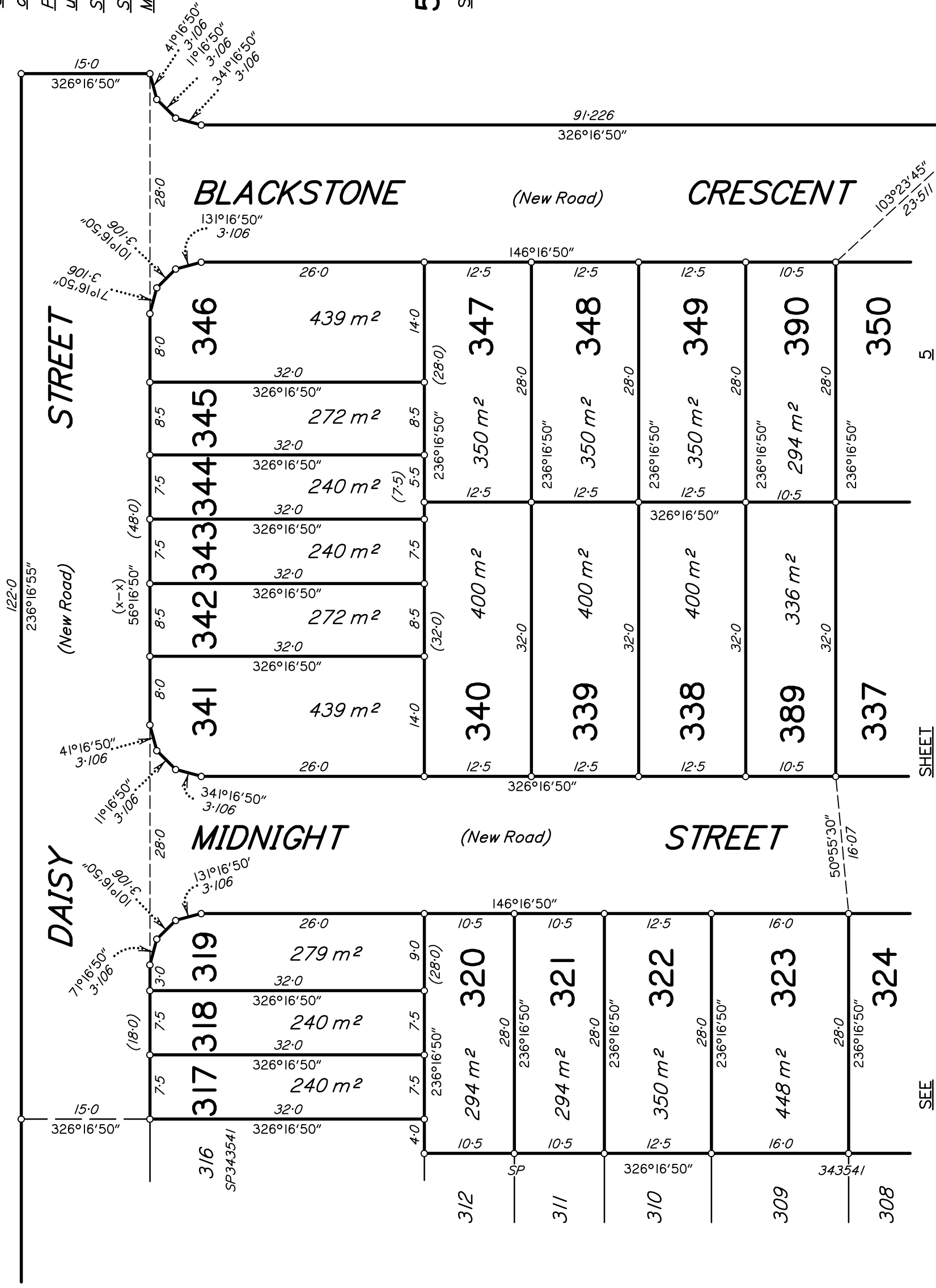
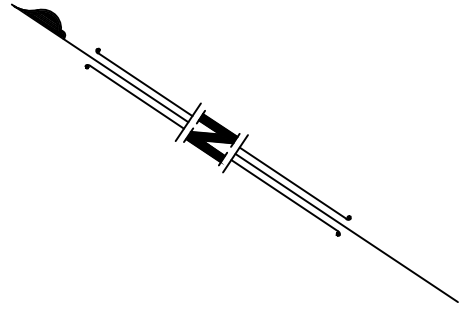
State copyright reserved.

Insert Plan Number **SP343542**

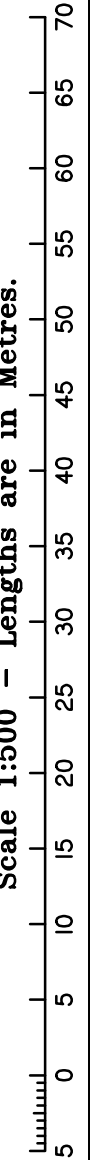
*Original information compiled from SP343541 in the Department of Resources.
Peg placed at all new corners, unless otherwise stated.
See Sheet 2 for Reinstatement Report.
See Sheet 3 for Reference Marks & MGA Coordinate Tables.*

501 (pt)
SEE SHEET 1

901
SEE SHEET 6

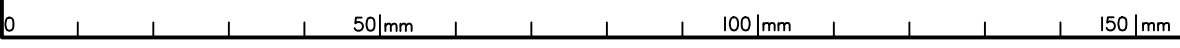


PRELIMINARY
05-12-2023



State copyright reserved.

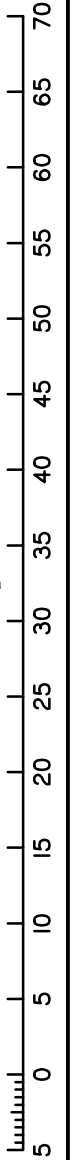
Insert Plan Number **SP343542**





*Original information compiled from
SP343541 in the Department of Resources.
Peg placed at all new corners,
unless otherwise stated.*

*See Sheet 2 for Reinstatement Report.
See Sheet 3 for Reference Marks &
MGA Coordinate Tables.*



State copyright reserved.

Insert Plan Number **SP343542**

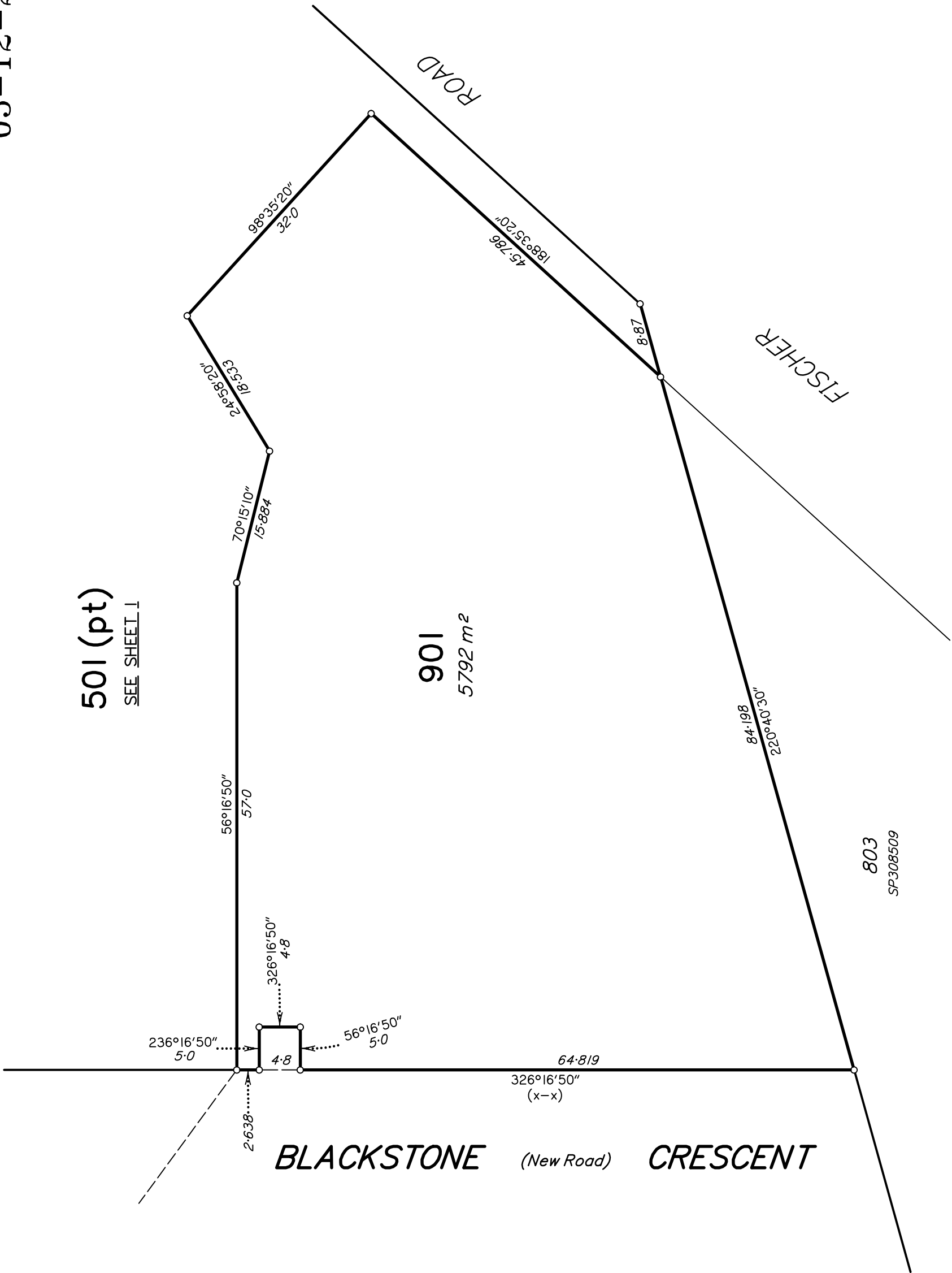


PRELIMINARY
05-12-2023

501 (pt)
SEE SHEET J

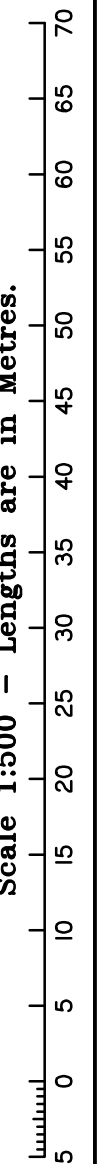
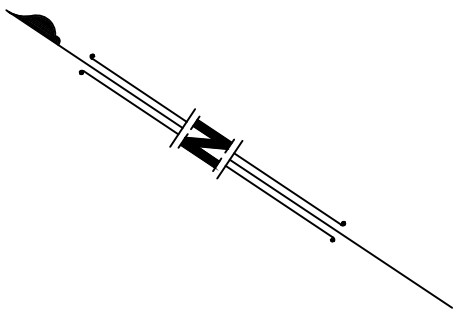
901
5792 m²

803
SP308509



*Original information compiled from
SP343541 in the Department of Resources.
Replaced at all new corners,
unless otherwise stated.*

*See Sheet 2 for Reinstatement Report.
See Sheet 3 for Reference Marks &
MGA Coordinate Tables.*



State copyright reserved.

Insert Plan Number **SP343542**