

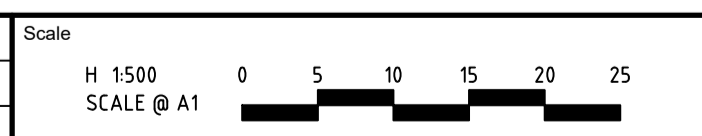


LEGEND

DESCRIPTION	EXISTING	PROPOSED	DESCRIPTION	EXISTING	PROPOSED	DESCRIPTION	EXISTING	PROPOSED
WATER MAIN, VALVE AND HYDRANT	DW	DW	CONCRETE VEHICLE CROSSING			TREE TO BE REMOVED		
WATER RECYCLED	NDW	NDW	SURFACE LEVEL	E123.45	F124.68	EXISTING TREE		
OVERHEAD ELECTRICITY	OE	OE	BATTER LEVEL (TOP / TOE)	T124.80	T124.80	EXISTING TREES		
UNDERGROUND ELECTRICITY	E	E	EARTHWORKS GRADE		1 in 150	EXCAVATION GREATER THAN 0.20m		
OPTIC FIBRE	OF	OF	FALL OF LOT			FILLING GREATER THAN 0.20m		
GAS MAIN	G	G	LIMIT OF WORKS					
SEWER & MAINTENANCE STRUCTURE	S	S	BATTER					
COUNCIL STORMWATER DRAIN AND PIT			FOOTPATH					
STORM WATER DRAINAGE PROPERTY INLETS								
COUNCIL STORM WATER PITS								
HOUSE DRAIN	H	H						

file name: 309089C01-ES-Plan-Rev-Layout-Stage 32-2022.dwg, plotted by: Buddhis, Warrakool, 23/06/2022 5:28 PM, Sheet: 1 of 1, Sheets

Rev	Description	Approved	Date
E	PRELIMINARY ISSUE	P.C.	25/07/22
D	PRELIMINARY ISSUE	P.C.	23/06/22
C	PRELIMINARY ISSUE	P.C.	16/06/22
B	PRELIMINARY ISSUE	P.C.	06/06/22
A	PRELIMINARY ISSUE	P.C.	01/06/22



System Certified

 © Spiire Australia Pty Ltd All Rights Reserved

 This document is produced by Spiire Australia Pty Ltd solely for the benefit of and use by the client in accordance with the terms of the retainer. Spiire Australia Pty Ltd does not and shall not assume any responsibility or liability whatsoever to any third party arising out of any use or reliance by third party on the content of this document.

L6 414 LA TROBE STREET PO BOX 16084 MELBOURNE
 VICTORIA 8007 AUSTRALIA T 61 3 9993 7888
 spiire.com.au ABN 55 050 029 635

Designed
 B. WARNAKULASURIYA

 Authorised
 P. CURNOW

 Checked
 J. POYNER

 Date
 23/06/2022

**ARCADIA ESTATE
 STAGE 32**

SALES PLAN
 CARDINIA SHIRE COUNCIL
 SATTERLEY PROPERTY GROUP

PRELIMINARY

 Dwg No
309089C100

 Rev
E