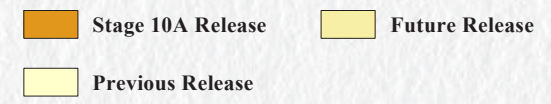
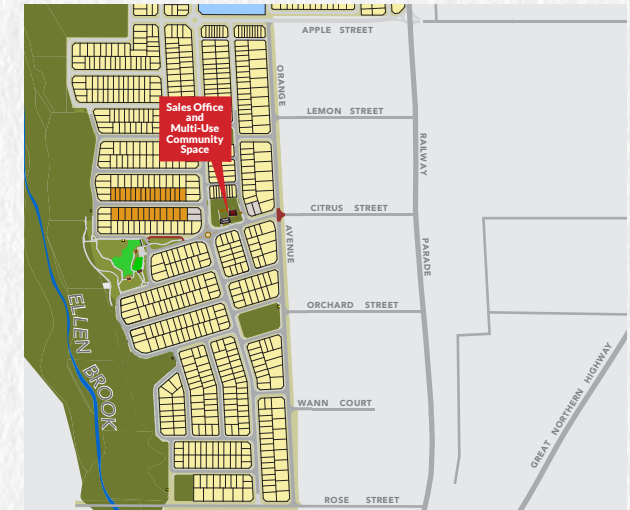




Clementine
UPPER SWAN



- Legend**
- Brick Paving
 - Red Asphalt
 - Footpath
 - Water Hydrant
 - Water Valve
 - Drainage Grate/Manhole
 - Side Entry Pit
 - Drainage Housing Connection
 - Mini Pillar & Connection
 - Universal Pillar & Connection
 - Western Power Padmount Site
 - Sewer Housing Connection/Manhole
 - Drainage Housing Connection & Easement
 - Street Light
 - Fibre Optic Network Line/Pit
 - Limestone Retaining Wall
 - Road Level
 - Lot Level
 - Footing Requirement Class 'S'
 - Subsoil Drainage

**For all enquiries, please contact
9368 9173**

Satterley Property Group Pty Ltd
Level 3, 27-31 Troode Street, West Perth WA 6005 ABN 38 009 054 979

This plan is intended to be indicative only and may not accurately or fully depict the actual or final development at present or in the future. It is not, and may not be taken as being, a representation in any respect by Satterley Property Group Pty Ltd, any seller or landowner and or any of their respective officers, employees, agents or advisers or anybody else. MNG REF.- 98753sa-150a DATE: 04/04/2024 ©COPYRIGHT